

Checklist of lichens for the Seychelles group

MARK R.D. SEAWARD¹ & ANDRÉ APTROOT²

¹ Department of Geography & Environmental Science, University of Bradford, Bradford BD7 1DP, UK

² ABL Herbarium, G.v.d.Veenstraat 107, NL-3762 XK Soest, The Netherlands

Abstract: A revised list of identified lichens for the Seychelles Group, based on field, herbarium and literature studies, is provided. In all, 376 species have been recorded from 28 islands (mainly Aldabra, Mahé, Praslin and Silhouette), and the following new species reported: *Cratiria sorediata*, *Enterographa aldabrensis* and *Pyrrhospora palmicola*.

Introduction

Administratively, the Seychelles Group is composed of widely scattered Indian Ocean atolls (with 115 islands) stretching in an arc from c. 640 km to c.1580 km from points directly east of mainland Africa; it is comprised of the Inner Islands (45 islands and a few isolated rocks collectively emerging from a great shallow bank which form the Seychelles proper) and the Amirantes, Farquhar, Alphonse and Aldabra groups (traditionally regarded as outside the archipelago geographically, being formed entirely of calcareous material, and therefore usually treated separately for ecological and biogeographical purposes). Most of the Inner Islands are granitic (situated between 4° and 5° S and between 55° and 56° E), being pre-Cambrian (e.g. Mahé and Praslin) or early Tertiary (e.g. Silhouette), but some are low-lying formed of coral debris (Bird, Denis and Plate). Further information on the geology, climate, topography and vegetation are provided in SEAWARD & APTROOT (2003, 2006, and the references cited therein).

As noted in SEAWARD & APTROOT (2006), details of the lichen flora for most of the Seychelles Group were lacking, there being only published accounts for Aldabra (SEAWARD et al. 1996, 2002) and Silhouette (SEAWARD & APTROOT 2003) and occasional records to support taxonomic works; a few old published records lack locality details and/or are difficult to taxonomically interpret in the absence of herbarium material (e.g. KREMPELHUBER 1869, NYLANDER 1885, Hue 1892). A preliminary checklist (SEAWARD & APTROOT 2006) listed 243 lichen taxa (209 determined to species, 10 to ± species and 13 to generic levels), mainly for Silhouette, Mahé and Aldabra. How can one justify the publication of another checklist within less than three years? As well as recent major taxonomic revisions, particularly for tropical groups, the earlier checklist undoubtedly proved

Tab. 1. Number of taxa recorded from individual islands of the Seychelles Group in 2006 and 2008 (* = Adjusted to include only taxa determined to species or \pm species levels).

Location	No. of taxa recorded	
	2006 *	2008
Aldabra Group		
Aldabra	44	132
Astove	3	3
Farquhar Group		
Farquhar Atoll	2	2
St Pierre	1	1
Alphonse Group		
Alphonse	8	8
Fouquet	4	4
St François	2	2
Amirantes Group		
D'Arros	1	1
Desroches	6	6
St Joseph's Atoll	4	5
Inner Islands		
Bird Island	4	4
Conception	1	1
Cousine	10	10
Curieuse	10	10
Denis	1	1
Frégate	6	6
Grand Soeur	6	6
La Digue	19	20
Mahé	87	243
Marianne	1	1
Moyenne	3	3
North Island	23	24
Praslin	28	66
Ronde	9	9
Silhouette	139	172
Souris	3	3
St Anne	0	17
Therèse	2	2
No. of species	216	376
No. of \pm species	8	10
Total	224	386

the catalyst for intense activity on the part of the authors, their attention being drawn, as a result of their plea for additional information (Seaward & Aptroot 2006), to numerous collections (mostly unnamed) in several herbaria. In consequence, 162 taxa (160 determined to species and 2 to \pm species levels) have been added to the checklist, 336 extra records have been added to particular islands (Table 1), and a large number of records for specific islands and for the Seychelles Group as a whole predate those given in Seaward & Aptroot (2006). Although there are more realistic biodiversity figures for some islands (Aldabra, Mahé, Praslin and Silhouette), even these islands require further investigation, and overall recording is very patchy or highly deficient for the remaining islands only 28 of which have been sampled (Table 1). Naturally, much fieldwork remains to be done and it is appreciated that other named and unnamed collections may reside in herbaria, but it is hoped that this checklist will provide a suitable baseline for future lichenological exploration of these islands, and indeed Indian Ocean islands in general, and a valuable addition to the web-site at HGB maintained by Tassilo Feuerer.

Checklist

The following checklist is based mainly on published sources and detailed studies of selected herbaria, supplemented by fieldwork undertaken by M. R. D. Seaward in 2000, J. Gerlach between 2000 and 2007, K. Beaver in 1993 and 1994, the lichens from which have been deposited in Herb. Seaward (MRDS), and D. Hill in 2003 (hb Aptroot - ABL); duplicates of some of these have been lodged in various herbaria, particularly MANCH, OXF and UPS. The list is by no means exhaustive, but due to the stimulus provided by our first checklist (SEAWARD & APTROOT 2006), some major herbarium collections, mainly from Aldabra, Mahé and Praslin, have been brought to light, for which we are indebted to S. LaGreca, E. Timdal and K. Beaver for drawing our attention to these; such collections include those assembled by G. Hnatiuk and colleagues as part of The Royal Society Survey of Aldabra in 1973-1974 (in BM; a few duplicates in FH, ABL, hb MRDS), by A. H. Norkett as part of the British Museum (Natural History) Expedition to the Seychelles in 1973-1974 (in BM; a few duplicates in ABL, hb MRDS, hb Lücking, hb Schultz), by J. Taylor and A. J. Rutter to Aldabra in 1969 and 1977 respectively (in BM), by H. Krog (accompanied by T. Pócs) from Mahé in 1993 (in O; a few duplicates in hb MRDS), and by K. Beaver from Silhouette in 1993 and Mahé, Praslin and La Digue in 1994 (in hb MRDS). Details of other collections examined (mainly in HBG, MANCH, STU) and a comprehensive bibliography are provided in SEAWARD & APTROOT (2006).

Where published sources are cited in the list which follows, no further details are provided other than to indicate where nomenclatural changes have been necessary; hitherto unpublished records are given in more detail, except for records derived from recent herbarium work (see above) which merely pre-date those published for a particular island, in which case only the name of the collector, date and herbarium are indicated, e.g. HNATIUK 1973 (BM). Names of newly recorded taxa since SEAWARD & APTROOT (2006) are preceded by an asterisk (*).

* *Absconditella delutula* (Nyl.) Coppins & Kiliias
ALDABRA: Cinque Cases, Grande Terre, 1969, J. Taylor [BM].

* *Aderkomyces albostrigosus* (R. Sant.) Lücking, Sérus. & Vězda
MAHÉ: near path to Botanical Gardens, Victoria, 10-20m, 1973, A. H. Norkett [BM].

* *Agonimia papillata* (O. Eriksson) Diederich & Aptroot
MAHÉ: near Solitude River, c.300m, 1973, A. H. Norkett [BM; MRDS 114589].

Amandinea efflorescens (Müll. Arg.) Marbach
ALDABRA: Hnatiuk 1973 [BM]; Seaward et al. 1996: 31; Seaward et al. 2002: 474 (as *Buellia efflorescens*);
Seaward & Aptroot 2006: 767. ALPHONSE: Seaward & Aptroot 2006: 767. BIRD: Seaward & Aptroot
2006: 767. COUSINE: Seaward & Aptroot 2006: 767. DESROCHES: Seaward & Aptroot 2006: 767.
FARQUHAR: Seaward & Aptroot 2006: 767. FOUQUET: Seaward & Aptroot 2006: 767. GRANDE
SOEUR: Seaward & Aptroot 2006: 768. MAHÉ: Norkett 1973 [BM]; Seaward & Aptroot 2006: 768.
NORTH: Seaward & Aptroot 2006: 768. SILHOUETTE: Seaward & Aptroot 2003: 428 (as *Buellia
efflorescens*), 2006: 768.

Amandinea extenuata (Müll. Arg.) Marbach
MAHÉ: Seaward & Aptroot 2006: 768. SILHOUETTE: Seaward & Aptroot 2003: 428 (as *Buellia
extenuata*), 2006: 768.

Amandinea multispora (Kalb & Vězda) Marbach
ALDABRA: Seaward et al. 2002: 475 (as *Buellia multispora*); Seaward & Aptroot 2006: 768.

* *Anisomeridium anislobum* (Müll. Arg.) Aptroot
MAHÉ: cliff walk beyond Dans Iles, 1973, A. H. Norkett [BM].

Anisomeridium consobrinum (Nyl.) Aptroot
ALDABRA: Hnatiuk 1973 [BM]; Seaward et al. 2002: 474; Seaward & Aptroot 2006: 768.

Anisomeridium musaesporoides Etayo & Lücking
SILHOUETTE: Seaward & Aptroot 2003: 427, 2006: 768.

* *Anisomeridium subprostans* (Nyl.) R. C. Harris
ALDABRA: Passe Houareau, Île Malabar, 1969, J. Taylor [BM]. SILHOUETTE: path from La Passe to
Grande Barbe, c.200m, 1973, A. H. Norkett [BM].

Anisomeridium tamarindi (Fée) R.C.Harris
ALDABRA: Hnatiuk 1973 [BM]; Seaward et al. 2002: 474; Seaward & Aptroot 2006: 768.

* *Anomomorpha subtorquens* (Nyl.) Staiger
PRASLIN: Glacis Noir, c. 320m, 1974, A. H. Norkett [BM; MRDS 114517].

* *Arthonia antillarum* (Fée) Nyl.
ALDABRA: on *Bruguiera*, Gionnet, 1974, R. J. Hnatiuk [BM; MRDS 114194]. PRASLIN: Grand Anse,
1974, A. H. Norkett [BM; MRDS 114513].

Arthonia catenulata Nyl.
ALDABRA: on *Mystroxydon aethiopicum*, Cinque Cases, 1973, R. J. Hnatiuk [BM]. MAHÉ: Le Niol Road,
c. 150m, 1973, A. H. Norkett [BM]. SILHOUETTE: Norkett 1973 [BM]; Seaward & Aptroot 2003: 427,
2006: 768.

* *Arthonia cinnabarina* (DC.) Wallr.
SILHOUETTE: forest near Jardin Marron, 300m, 1973, A. H. Norkett [BM].

Arthonia conferta (Fée) Nyl.
ALPHONSE: Seaward & Aptroot 2006: 768. FRÉGATE: Seaward & Aptroot 2006: 768. NORTH: Seaward
& Aptroot 2006: 768. SILHOUETTE: Seaward & Aptroot 2003: 427, 2006: 768.

Arthonia lividula Vain.
PRASLIN: Vězda (*Lichenes Rariores Exsiccati*, fasc.44, no.431); Seaward & Aptroot 2006: 768.

Arthonia cf. *rubiginella* Nyl.

ALDABRA: Seaward et al. 2002: 474; Seaward & Aptroot 2006: 768.

Arthonia spadicea Leight.

SILHOUETTE: Seaward & Aptroot 2003: 427, 2006: 768.

* *Arthonia subrubella* Nyl.

ALDABRA: on *Cocos nucifera*, Île Polymnie, 1973, R. J. Hnatiuk [BM].

Arthonia trilocularis Müll.Arg.

MAHÉ: path up Crève Coeur, 250m, 1973, A. H. Norkett [BM]. SILHOUETTE: Seaward & Aptroot 2003: 427, 2006: 768.

Arthopyrenia majuscula (Nyl.) Zahlbr.

ALDABRA: Taylor 1969 [BM]; Hnatiuk 1973 [BM]; Seaward et al. 2002: 474; Seaward & Aptroot 2006: 768. MAHÉ: Norkett 1973 [BM]; Seaward & Aptroot 2006: 768. SILHOUETTE: Seaward & Aptroot 2003: 427, 2006: 768.

Arthothelium feuereri Aptroot & Seaward

MAHÉ: Seaward & Aptroot 2004: 119, 2006: 768.

* *Aspidothelium glabrum* Lücking, Aptroot & Sipman

MAHÉ: on twigs, Cascade, 60m, 1973, A. H. Norkett [BM].

* *Astrothelium cinnamomeum* Müll.Arg.

SILHOUETTE: Scott Vale, 350m, 1973, A. H. Norkett [BM].

Bacidia hostheleoides (Nyl.) Zahlbr.

ALDABRA: on *Ficus nautarum*, Cinque Cases, 1973, R. J. Hnatiuk [BM]. COUSINE: Seaward & Aptroot 2006: 768. MAHÉ: Botanical Gardens, Victoria, 1973, A.H.Norkett [BM]. ST ANNE: 1973, A.H.Norkett [BM; MRDS 114365]. SILHOUETTE: Norkett 1973 [BM]; Seaward & Aptroot 2003: 427, 2006: 768.

Bacidia medialis (Tuck. ex Nyl.) B.de Lesd.

MAHÉ: Seaward & Aptroot 2006: 768. ST ANNE: 1973, A.H.Norkett [BM]. SILHOUETTE: path from La Passe to Grande Barbe, c.200m, 1973, A.H.Norkett [BM]

* *Bacidina apiahica* (Müll.Arg.) Vězda

MAHÉ: path to Le Niol Road, 70m, 1974, A. H. Norkett [BM; hb Lücking].

* *Bactrospora metabola* (Nyl.) Egea & Torrente

ALDABRA: on *Mystroxydon aethiopicum*, Cinque Cases, 1973, R. J. Hnatiuk [BM]. MAHÉ: on summit slopes of Bernica, Grand Anse, c.270m, 1973, A. H. Norkett [BM].

Bactrospora myriadea (Fée) Egea & Torrente

ALDABRA: Hnatiuk 1973 [BM]; Seaward et al. 2002: 474; Seaward & Aptroot 2006: 768. MAHÉ: Seaward & Aptroot 2006: 768. NORTH: Seaward & Aptroot 2006: 768. PRASLIN: Seaward & Aptroot 2006: 768. SILHOUETTE: Seaward & Aptroot 2006: 768.

Badimia cateilea (Vain.) Lücking, Lumbsch & Elix

MAHÉ: near path to Botanical Gardens, Victoria, 10-20m, 1973, A. H. Norkett [BM; hb Lücking]. PRASLIN: Forest Station, Fond B'Offay, 150m, 1974, A. H. Norkett [BM]. SILHOUETTE: Seaward & Aptroot 2003: 427, 2006: 768.

* *Badimia elegans* (Vain.) Vězda

MAHÉ: Morne Blanc, 600m, 1994, K. Beaver [MRDS 114319].

Badimia galbinea (Kremp.) Vězda

MAHÉ: Morne Blanc, 600m, 1974, A. H. Norkett [BM]. SILHOUETTE: Seaward & Aptroot 2003: 427, 2006: 768.

Badimia pallidula (Kremp.) Vězda

MAHÉ: Vězda (*Lichenes Rariores Exsiccati*, fasc.43, no.423); Seaward & Aptroot 2006: 768.

- Badimia polillensis*** (Vain.) Vězda
 MAHÉ: Grand Bois, 2002, J. Gerlach [MRDS 115553 sub *Loflammia gabielis*]. SILHOUETTE: Seaward & Aptroot 2003: 427, 2006: 768.
- * ***Bathelium mastoideum*** Afzel. ex Ach.
 ALDABRA: on *Calliandra alternans*, Gionnet, 1974, R. J. Hnatiuk [BM; MRDS 114061].
- Buellia halonia*** (Ach.) Tuck.
 MAHÉ: Seaward & Aptroot 2006: 769.
- Buellia mamillana*** (Tuck.) W.A. Weber
 SILHOUETTE: Seaward & Aptroot 2003: 428, 2006: 769.
- Buellia subdisciformis*** (Leighton) Jatta
 MAHÉ: Seaward & Aptroot 2006: 769.
- Bulbothrix goebelii*** (Zenker) Hale
 MAHÉ: Norkett 1973 [BM]; Krog 1993 [O]; Seaward & Aptroot 2006: 769. PRASLIN: Anse Citron, 1993, H.Krog [O]. SILHOUETTE: Norkett 1973 [BM]; Seaward & Aptroot 2003: 428, 2006: 769.
- * ***Bulbothrix isidiza*** (Nyl.) Hale
 MAHÉ: Botanical Gardens, Victoria, c.30m, 1973, A. H. Norkett [BM].
- * ***Bulbothrix tabacina*** (Mont. & Bosch) Hale
 MAHÉ: Botanical Gardens, Victoria, 1973, A. H. Norkett [BM].
- Byssoloma annuum*** (Vain.) Thor, Lücking & Matsumoto
 SILHOUETTE: Seaward & Aptroot 2003: 428, 2006: 769.
- Byssoloma chlorinum*** (Vain.) Zahlbr.
 PRASLIN: Norkett 1974 [BM]; Vězda (*Lichenes Rariores Exsiccati*, fasc.44, no.436); Seaward & Aptroot 2006: 769. SILHOUETTE: Seaward & Aptroot 2003: 428, 2006: 769.
- Byssoloma leucoblepharum*** (Nyl.) Vain.
 SILHOUETTE: Norkett 1973 [BM]; Seaward & Aptroot 2003: 428, 2006: 769.
- * ***Byssoloma minutissimum*** Kalb & Vězda
 MAHÉ: Le Niol, 1973, A. H. Norkett [BM].
- Byssoloma subdiscordans*** (Nyl.) P.James
 MAHÉ: Norkett 1973 [BM]; Vězda (*Lichenes Rariores Exsiccati*, fasc.43, no.426); Seaward & Aptroot 2006: 769.
- * ***Calenia graphidea*** Vain.
 MAHÉ: Vingt-Cinq Sous, 460m, 1973, A. H. Norkett [BM].
- Caleniopsis laevigata*** (Müll. Arg.) Vězda & Poelt
 SILHOUETTE: Seaward & Aptroot 2003: 428, 2006: 769.
- * ***Calicium hyperelloides*** Nyl.
 MAHÉ: on *Cocos nucifera*, Botanical Gardens, Victoria, 1973, A. H. Norkett [BM; MRDS 114364].
- Calopadia puiggarii*** (Müll.Arg.) Vězda
 SILHOUETTE: Seaward & Aptroot 2003: 428, 2006: 769.
- Calopadia* cf. *subfusca*** Kalb & Vězda
 SILHOUETTE: Seaward & Aptroot 2003: 428, 2006: 769.
- * ***Calopadia vermiculifera*** (Vain.) Sérus.
 MAHÉ: Morne Blanc, 600m, 1974, A. H. Norkett [BM].
- Caloplaca bassiae*** (Ach.) Zahlbr.
 ALDABRA: Taylor 1969 [BM]; Hnatiuk 1973 [BM]; Seaward et al. 1996: 32, 2002: 475; Seaward & Aptroot 2006: 769. LA DIGUE: Seaward & Aptroot 2006: 769. MAHÉ: Norkett 1973 [BM]; Seaward & Aptroot

2006: 769. PRASLIN: Norkett 1973 [BM]; Seaward & Aptroot 2006: 769. RONDE: Seaward & Aptroot 2006: 769. SILHOUETTE: Seaward & Aptroot 2003: 428, 2006: 769.

* *Caloplaca* cf. *flavorubescens* (Huds.) J.R.Laundon
MAHÉ: near Sans Souci Road, c.120m, 1973, A. H. Norkett [BM].

* *Caloplaca* cf. *gambiensis* Aptroot
ALDABRA: on *Cocos nucifera*, Research Station, 1974, R. J. Hnatiuk [BM sub *C. pulicarioides*].

Caloplaca leptozona (Nyl.) Zahlbr.
COUSINE: Seaward & Aptroot 2006: 769. CURIEUSE: Seaward & Aptroot 2006: 769. MAHÉ: Government House Gardens, Victoria, c.10m, 1973, A. H. Norkett [BM]. SILHOUETTE: Seaward & Aptroot 2003: 428, 2006: 769.

Caloplaca pulicarioides Aptroot
ALDABRA: Hnatiuk 1973 [BM]; Seaward et al. 2002: 475; Seaward & Aptroot 2006: 769. MAHÉ: cliff walk beyond Dans Iles, 20-30m, 1973, A. H. Norkett [BM]. PRASLIN: Seaward & Aptroot 2006: 769. ST JOSEPH: Seaward & Aptroot 2006: 769. SILHOUETTE: Norkett 1973 [BM]; Seaward & Aptroot 2003: 429, 2006: 769.

* *Canoparmelia caroliniana* (Nyl.) Elix & Hale
MAHÉ: Botanical Gardens, Victoria, c.20m, 1973, A. H. Norkett [BM].

* *Canoparmelia owariensis* (Asah.) Elix
MAHÉ: on granite rock, Danzil-Anse Major, 1994, K. Beaver [MRDS 114323].

Chrysothrix xanthina (Vain.) Kalb
ALDABRA: Taylor 1969 [BM]; Hnatiuk 1973 [BM]; Seaward et al. 2002: 475 (as *C. candelaris*); Seaward & Aptroot 2006: 769. ALPHONSE: Seaward & Aptroot 2006: 769. CURIEUSE: Seaward & Aptroot 2006: 769. LA DIGUE: Seaward & Aptroot 2006: 769. MAHÉ: Norkett 1973 [BM]; Seaward & Aptroot 2006: 769. NORTH: Seaward & Aptroot 2006: 769. PRASLIN: on twigs, Glacis Noir, c.320m, 1974, A. H. Norkett [BM]. RONDE: Seaward & Aptroot 2006: 769. SILHOUETTE: Seaward & Aptroot 2003: 429, 2006: 769.

* *Chiodecton philippinum* Vain.
MAHÉ: on large granite boulder, Danzil, c.20m, 1994, K. Beaver [MRDS 114643]. PRASLIN: on underside of boulder, Coco de Mer Hotel Nature Trail, c.120m, 1994, K. Beaver [MRDS 114642].

* *Cladonia borbonica* Nyl.
MAHÉ: NW ridge of New Savy summit, 520m, 1993, H.Krog [O].

* *Cladonia cartilaginea* Müll.Arg.
MAHÉ: NW ridge of New Savy summit, 520m, 1993, H.Krog [O].

* *Cladonia corniculata* Ahti & Kashw.
MAHÉ: Sans Souci Forest Station – Trois Frères, 500-690m, 1993, H.Krog [O].

Cladonia didyma (Fée) Vain.
MAHÉ: Seaward & Aptroot 2006: 769.

* *Cladonia fruticulosa* Kremp.
MAHÉ: Sans Souci Forest Station – Trois Frères, 500-690m, 1993, H.Krog [O].

* *Cladonia macilenta* Hoffm.
MAHÉ: Anse Royale – Anse Boileau Bay, 1993, H.Krog [O]; Beaver 1994 [MRDS 114310, 114349].

Cladonia mauritiana Ahti & J.C.David
MAHÉ: Norkett 1973 [BM]; Krog 1993 [O]; Seaward & Aptroot 2006: 770. SILHOUETTE: Norkett 1973 [BM]; Seaward & Aptroot 2003: 429, 2006: 770.

* *Cladonia subdelicatula* Asah.
MAHÉ: forest above Le Niol, c.230m, 1973, A. H. Norkett [BM].

* *Cladonia submultiformis* Asah.
MAHÉ: SE ridge & summit of Morne Blanc, 450-669m, 1993, H.Krog [O].

Cladonia subsquamosa Kremp.

MAHÉ: Seaward & Aptroot 2006: 770.

Coccocarpia adnata L.Arvidss.

ALDABRA: on *Mystroxyylon aethiopicum*, Dune de Messe, 1973, R. J. Hnatiuk [BM]. MAHÉ: Norkett 1973 [BM]; Krog 1993 [O]; Seaward & Aptroot 2006: 770. PRASLIN: Anse la Blague, 1993, H.Krog [O]. SILHOUETTE: Seaward & Aptroot 2003: 429, 2006: 770.

Coccocarpia erythroxyli (Spreng.) Swinscow & Krog

ALDABRA: Hnatiuk 1973 [BM]; Seaward et al. 1996: 32, 2002: 475; Seaward & Aptroot 2006: 770. MAHÉ: on felled *Albizia*, path up to Vingt-Cinq Sous, c.300m, A. H. Norkett [BM]. PRASLIN: Glacis Noir, c.320m, 1974, A. H. Norkett [BM; MRDS 114594].

Coccocarpia palmicola (Spreng.) L. Arvidss. & D.J.Galloway

ALDABRA: Taylor 1969 [BM]; Hnatiuk 1973 [BM]; Seaward et al. 2002: 475 ; Seaward & Aptroot 2006: 770. CURIEUSE: Seaward & Aptroot 2006: 770. MAHÉ: Norkett 1973 [BM]; Krog 1993 [O]; Seaward & Aptroot 2006: 770. NORTH: Seaward & Aptroot 2006: 770. PRASLIN: on *Cocos nucifera*, Vallée de Mai, 1974, A.H.Norkett [BM]; Krog 1993 [O]. ST ANNE: 1973, A.H.Norkett [BM]. SILHOUETTE: Seaward & Aptroot 2003: 429, 2006: 770.

Coccocarpia pellita (Ach.) Müll.Arg.

ALDABRA: on *Mystroxyylon aethiopicum*, Dune de Messe, 1973, R. J. Hnatiuk [BM]. ST ANNE: 1973, A.H.Norkett [BM]. SILHOUETTE: Seaward & Aptroot 2003: 429, 2006: 770.

Coccocarpia smaragdina Pers.

MAHÉ: Norkett 1973 [BM]; Krog 1993 [O]; Arvidsson 1982: 86; Seaward & Aptroot 2006: 770. PRASLIN: Vallée de Mai National Park, 140-150m, 1993, H. Krog [O]. SILHOUETTE: forest below Corgate, c. 400m, 1973, A. H. Norkett [BM].

Coenogonium dilucidum (Kremp.) Kalb & Lücking

PRASLIN: Vězda (*Lichenes Rariores Exsiccati*, fasc.43, no.428]; Seaward & Aptroot 2006: 770.

Coenogonium geralense (P.Henn.) Lücking

SILHOUETTE: Seaward & Aptroot 2003: 429, 2006: 770.

* ***Coenogonium leprieurii*** (Mont.) Nyl.

MAHÉ: Congo Rouge, c.700m, 1973, A. H. Norkett [BM]. SILHOUETTE: Scott Vale, 1973, A. H. Norkett [BM].

Coenogonium luteum (Dicks.) Kalb & Lücking

MAHÉ: Salazie Bridge, 450m, 1973, A.H.Norkett [BM]. PRASLIN: on *Cocos nucifera*, Vallée de Mai, c.200m, 1974, A.H.Norkett [BM; MRDS 114405]. ST ANNE: 1973, A.H.Norkett [BM]. SILHOUETTE: Norkett 1973 [BM]; Seaward & Aptroot 2003: 430 (as *Dimerella lutea*), 2006: 770.

Coenogonium stramineum (Aptroot & Seaward) Lücking, Aptroot & Sipman

ALDABRA: on *Xylocarpus granatum*, Passe Gionnet, 1974, R. J. Hnatiuk [BM; MRDS 114286]. MAHÉ: Forêt Niol Road, Morne Blanc, c.650m, 1974, A. H. Norkett [BM]. SILHOUETTE: Seaward & Aptroot 2003: 430 (as *Dimerella* sp.2], 2004: 121 (as *Dimerella straminea*), 2006: 770.

* ***Coenogonium subfallaciosum*** (Vězda & Farkas) Lücking, Aptroot & Sipman

MAHÉ: path near to Botanical Gardens, Victoria, 10-20m, 1973, A. H. Norkett [BM].

Coenogonium subluteum (Rehm) Kalb & Lücking

MAHÉ: La Bourdonnais, Victoria, 10m, 1974, A. H. Norkett [BM]. SILHOUETTE: Seaward & Aptroot 2003: 429, 2006: 770.

Coenogonium subsquamosum (Aptroot & Seaward) Lücking, Aptroot & Sipman

MAHÉ: near sea level, NE Point, 1973, A. H. Norkett [BM]. SILHOUETTE: Seaward & Aptroot 2003: 430 (as *Dimerella* sp.1], 2004: 122 (as *Dimerella subsquamosa*), 2006: 770.

* ***Coenogonium zonatum*** (Müll.Arg.) Kalb & Lücking

MAHÉ: path to St Louis, 1973, A. H. Norkett [BM].

* *Collema leptaleum* Tuck.

MAHÉ: on rocks, Botanical Gardens, Victoria, c.30m, 1973, A. H. Norkett [BM].

* *Collema pustulatum* Ach.

ALDABRA: on exposed rock, Bassin Flamant, 1973, R. J. Hnatiuk [BM; MRDS 114706]; Schultz & Aptroot 2008: 435.

Collema rugosum Kremp.

ALDABRA: Taylor 1969 [BM]; Hnatiuk 1973 [BM]; Degelius 1974: 154, Seaward *et al.* 1996: 32, 2002: 475; Seaward & Aptroot 2006: 770. DESROCHES: Seaward & Aptroot 2006: 770. GRANDE SOEUR: Seaward & Aptroot 2006: 770. LA DIGUE: Seaward & Aptroot 2006: 770. MAHÉ: Norkett 1973 [BM]; Krog 1993 [O]; Seaward & Aptroot 2006: 770. MARIANNE: Seaward & Aptroot 2006: 770. MOYENNE: Seaward & Aptroot 2006: 770. NORTH: Seaward & Aptroot 2006: 770. PRASLIN: Norkett 1974 [BM]; Seaward & Aptroot 2006: 770. RONDE: Seaward & Aptroot 2006: 770. ST ANNE: 1973, A.H.Norkett [BM; MRDS 114592]. SILHOUETTE: Norkett 1973 [BM]; Seaward & Aptroot 2003: 429, 2006: 770. THERÈSE: Seaward & Aptroot 2006: 770.

* *Collema thamnoides* Tuck. ex Riddle

ALDABRA: on exposed rocks, Île Picard, 1973, R. J. Hnatiuk [BM; MRDS 114705]; Schultz & Aptroot 2008: 436.

* *Collemopsidium cf. halodytes* (Nyl.) Grube & B.D. Ryan

ALDABRA: on rock, Dune de Messe, 1973, R. J. Hnatiuk [BM].

Cratiria americana (Fée) Kalb & Marbach

ALDABRA: on dead *Pemphis*, Cinque Cases, 1973, R. J. Hnatiuk [BM]. MAHÉ: Norkett 1973 [BM]; Seaward & Aptroot 2006: 771. RONDE: Seaward & Aptroot 2006: 771.

Cratiria dissimilis (Nyl.) Marbach

MAHÉ: Norkett 1973 [BM]; Seaward & Aptroot 2006: 771. SILHOUETTE: Seaward & Aptroot 2003: 427 (as *Buellia dissimilis*), 2006: 771.

Cratiria lauricassiae (Fée) Marbach

ALDABRA: Taylor 1969 [BM]; Hnatiuk 1973 [BM]; Seaward *et al.* 2002: 474 (as *Buellia lauricassiae*); Seaward & Aptroot 2006: 771. MAHÉ: Norkett 1973 [BM]; Seaward & Aptroot 2006: 771. PRASLIN: Seaward & Aptroot 2006: 771. SILHOUETTE: Seaward & Aptroot 2003: 428 (as *Buellia lauricassiae*), 2006: 771.

* ***Cratiria soredata* Aptroot & Seaward sp. nov.**

Cratiria thallo ochraceo dense soredata, acidum norsticum continente.

Type: SEYCHELLES. Aldabra, on dead *Pemphis*, Cinque Cases, 1973, R. J. Hnatiuk [BM holotype; ABL isotype].

(Fig. 1A-C)

Thallus corticolous, slightly shiny, corticate, smooth, pale ochraceous grey, covering an area of up to 3 cm diam. Soredia formed in roundish, shallow soralia later covering much of the thallus, ochraceous yellow.

Apothecia sessile, round to wavy, saucer-shaped, 0.3-0.5 mm diam. Disc black, shiny, flat, without pruina. Apothecium margin prominent, raised above the disc, black, shiny, c. 0.1 mm wide. *Excipulum* c. 75 µm wide, black outside, in section largely dark brown, pale brown inside, with crystals, lumina c. 10 µm wide. *Hypothecium* dark brown, c. 20-30 µm high. *Hymenium* not interspersed, c. 70-90 µm high. Epithymenium consisting of brown caps of paraphysis, without crystals, c. 4 µm high, K-. *Ascospores* 8/ascus, ellipsoid, 1-septate, brownish-black, 13-15 × 7-8 µm, not ornamented.

Chemistry: norstictic acid; thallus and soredia K+ red.

Distribution and ecology: Known only from the type locality. Corticolous on coastal trees and shrubs.

Notes: This species is the first *Cratiria* with soredia and norstictic acid.

Cresponea flava (Vain.) Egea & Torrente

ALDABRA: on *Polysphaeria multiflora*, Cinque Cases, 1973, R. J. Hnatiuk [BM]. MAHÉ: on *Albizzia*, Botanical Gardens, Victoria, 1973, A. H. Norkett [BM]. PRASLIN: Norkett 1973 [BM sub *Pseudopyrenula subnudata*]; Seaward & Aptroot 2006: 771. ST ANNE : on twigs, 1973, A.H.Norkett [BM]. SILHOUETTE: Norkett 1973 [BM]; Seaward & Aptroot 2003: 429, 2006: 771.

Cresponea leprieurii (Mont.) Egea & Torrente

MAHÉ: Seaward & Aptroot 2006: 771.

* *Cresponea proximata* (Nyl.) Egea & Torrente

ALDABRA: La Gigi, 1973, S.H.Hnatiuk [BM sub *Enterographa anguinella*].

* *Crocynia gossypina* (Sw.) A.Massal.

MAHÉ: on *Northea*, Mare aux Cochons, 1994, K. Beaver [MRDS 114308].

Cryptolechia subincolorella (Nyl.) D.Hawksw.

MAHÉ: on *Azelia*, Botanical Gardens, Victoria, c.30m, 1973, A. H. Norkett [BM]. PRASLIN: Grand Anse, 1974, A. H. Norkett [BM]. SILHOUETTE: Seaward & Aptroot 2003: 429, 2006: 771.

Cryptothecia aleurella (Nyl.) Makhija & Patw.

PRASLIN: Seaward & Aptroot 2006: 771. SILHOUETTE: Seaward & Aptroot 2003: 429, 2006: 771.

**Cryptothecia aleurodes* (Nyl.) Makhija & Patw.

MAHÉ: Sans Souci Road, 100m, 1973, A. H. Norkett [BM].

**Cryptothecia granularis* Sipman

MAHÉ: Solitude River, La Misère Road, c.300m, 1973, A. H. Norkett [BM].

* *Cryptothecia punctosorediata* Sparrius

ALDABRA: Grande Terre, 1992, Harrington & Potter [MRDS 110671].

Dichosporidium cf. *boschianum* (Mont.) Thor

MAHÉ: Seaward & Aptroot 2006: 771. PRASLIN: Seaward & Aptroot 2006: 771.

Dichosporidium brunthaleri (Zahlbr.) Thor

MAHÉ: Norkett 1973 [BM; MRDS 114639]; Beaver 1994 [MRDS 114641]; Henssen & Thor 1998: 107; Seaward & Aptroot 2006: 771.

Dichosporidium latisporum Thor & Henssen

MAHÉ: Norkett 1973 [BM; MRDS 114638]; Henssen & Thor 1998: 111 (on page 109 also as *D. seychellensis*); Seaward & Aptroot 2006: 771. PRASLIN: Norkett 1974 [BM]; Henssen & Thor 1994: 44; Henssen & Thor 1998: 107; Seaward & Aptroot 2006: 771.

* *Dictyonema phyllogenum* (Müll.Arg.) Zahlbr.

MAHÉ: Morne Blanc, 600m, 1974, A. H. Norkett [BM].

* *Dictyonema sericeum* (Swartz) Berk.

MAHÉ: Trois Frères, 600-750m, 1993, H.Krog [O].

* *Diorygma hieroglyphicum* (Pers.) Staiger & Kalb

MAHÉ: Botanical Gardens, Victoria, c.20m, 1973, A. H. Norkett [BM]. PRASLIN: near Plaine Hollandaise, c.180m, 1974, A. H. Norkett [BM; MRDS 114593]. SILHOUETTE: path to Pot à Eau, c.300m, 1973, A. H. Norkett [BM; MRDS 114610].

Diorygma junghuhnii (Mont. & v.s.Bosch) Kalb, Staiger & Elix

LA DIGUE: Seaward & Aptroot 2006: 773 (as *Graphina* cf. *mendax*). MAHÉ: Botanical Gardens, Victoria, c.30m, 1973, A. H. Norkett [BM].

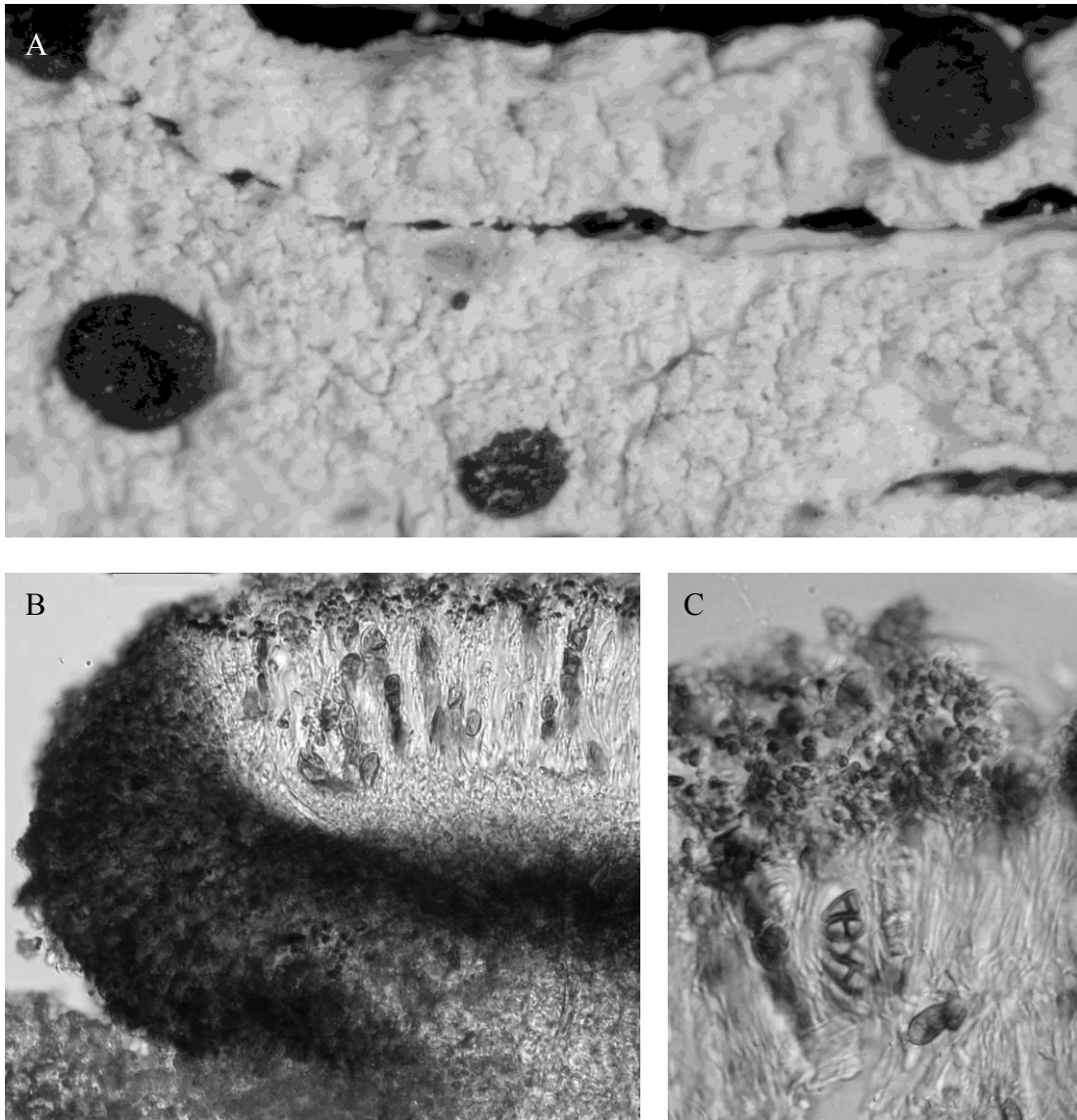


Fig. 1. *Cratiria sorediata* (holotype). A. thallus with apothecia; B. ascumatal section; C. Ascus and ascospores.

Diorygma poitaei (Fée) Kalb, Staiger & Elix
 MAHÉ: Seaward & Aptroot 2006: 773 (as *Graphina erythrella*).

Dirinaria aegialita (Ach. in Afz.) B.Moore
 CURIEUSE: Seaward & Aptroot 2006: 771. MAHÉ: Norkett 1973 [BM]; Seaward & Aptroot 2006: 771.
 PRASLIN: Norkett 1973 [BM]; Anse Citron, 1993, H.Krog [O]. ST ANNE: 1973, A.H.Norkett [BM].
 SILHOUETTE: Seaward & Aptroot 2003: 430, 2006: 771.

Dirinaria applanata (Fée) Awasthi
 ALDABRA: Taylor 1969 [BM]; Hnatiuk 1973 [BM]; Seaward *et al.* 2002: 475; Seaward & Aptroot 2006:
 771. COUSINE: Seaward & Aptroot 2006: 771. FOUQUET: Seaward & Aptroot 2006: 771. MAHÉ: NE
 Point, 1973, A.H.Norkett [BM]; Krog 1993 [O]; Beaver 1994, K.Beaver [MRDS 114302]. NORTH: Seaward
 & Aptroot 2006: 771. PRASLIN: Anse Citron, 1993, H.Krog [O]. ST ANNE: 1973, A.H.Norkett [BM];
 114363]. ST PIERRE: Seaward & Aptroot 2006: 771. SILHOUETTE: Seaward & Aptroot 2003: 430, 2006:
 771. SOURIS: Seaward & Aptroot 2006: 771.

**Dirinaria papillulifera* (Nyl.) D.D.Awasthi
ALDABRA: on *Cocos nucifera*, Île Picard, 1973, R. J. Hnatiuk [BM].

Dirinaria picta (Sw.) Shear. & Clem.
ALDABRA: Taylor 1969 [BM]; Hnatiuk 1973 [BM]; Seaward *et al.* 1996: 32, 2002: 475; Seaward & Aptroot 2006: 771. ALPHONSE: Seaward & Aptroot 2006: 771. ASTOVE: Seaward & Aptroot 2006: 772. CURIEUSE: Seaward & Aptroot 2006: 772. DENIS: Seaward & Aptroot 2006: 772. DESROCHES: Seaward & Aptroot 2006: 772. FOUQUET: Seaward & Aptroot 2006: 772. FRÉGATE: Seaward & Aptroot 2006: 772. GRANDE SOEUR: Seaward & Aptroot 2006: 772. LA DIGUE: Seaward & Aptroot 2006: 772. MAHÉ: Norkett 1973 [BM]; Krog 1993 [O]; Seaward & Aptroot 2006: 772. NORTH: Seaward & Aptroot 2006: 772. PRASLIN: Norkett 1973 [BM sub *Pseudopyrenula subnudata*]; Krog 1993 [O]; Seaward & Aptroot 2006: 772. RONDE: Seaward & Aptroot 2006: 772. ST ANNE: 1973, A.H.Norkett [BM]. ST JOSEPH: Seaward & Aptroot 2006: 772. SILHOUETTE: Norkett 1973 [BM]; Seaward & Aptroot 2003: 430, 2006: 772.

* *Dyplotabia afzelii* (Ach.) A.Massal.
ALDABRA: on dead wood, Takamaka Grove, 1973, A.Donaldson [BM].

Echinoplaca cf. *diffluens* (Müll.Arg.) R.Sant.
SILHOUETTE: Seaward & Aptroot 2003: 430, 2006: 772.

* *Echinoplaca leucotrichodes* (Vain.) R.Sant.
MAHÉ: Solitude Stream, La Misère Road, 300m, 1973, A. H. Norkett [BM].

* *Echinoplaca pellicula* (Vain.) R.Sant.
MAHÉ: near waterfall, above Cascade, 1973, A. H. Norkett [BM; hb Lücking].

* *Endocarpon pallidulum* (Nyl.) Nyl.
MAHÉ: on walls, Royal Street, Victoria, 1974, A. H. Norkett [BM].

* *Endocarpon pusillum* Ach.
MAHÉ: Seaward & Aptroot 2006: 772.

* ***Enterographa aldabrensis* Sparrius sp. nov.**

Sicut *Enterographa subserialis* ascosporis 3-septatis differt, sine acidico norstictico.

Type: SEYCHELLES. Aldabra, Cinque Cases, on *Sideroxylon inerme*, 16. IV. 1973, leg. R.J. Hnatiuk 730189 [BM Holotype].

(Fig. 2)

Thallus up to 5 cm in diam., smooth to areolate, white to cream-coloured, water-repellent, thin, 50–100 µm thick. *Photobiont* *Trentepohlia*. *Prothallus* very thin, grey or absent. *Upper algae-free medulla* c. 10 µm thick, of densely interwoven hyphae. *Medulla* cream-coloured, with abundant oxalate crystals of 10–20 µm diam.

Ascomata punctiform or slightly comma-shaped, perithecioid, 0.05 × 0.05–0.10 mm, disc dark brown to black, epruinose. *Thalline margin* c. 0.1 mm wide, in line with the ascomatal disc, forming linear, frequently branched, pseudostromata, which can become mixed with neighbouring pseudostromata. *Excipulum* 5–10 µm wide, hyaline in section, but often brown near the epithecium. *Hypothecium* hyaline, 10–30 µm tall, K–. *Hymenium* hyaline, 80–100 µm tall. *Paraphysoids* c. 0.8 µm wide, apices not widened, irregularly branched and anastomosing. *Epithecium* 10–12 µm tall, orange-brown, with crystals of c. 0.5 µm diam., K+ green. *Asci* 60–80 × 12–20 µm, cylindrical, 8-spored. *Ascospores* ellipsoid, somewhat constricted around the middle, 13–(15)–18 × (3.0–)4.0–5.5(–6.0) µm, 3-septate, perispore < 2.0 µm thick. *Conidiomata* visible as dark brown dots along

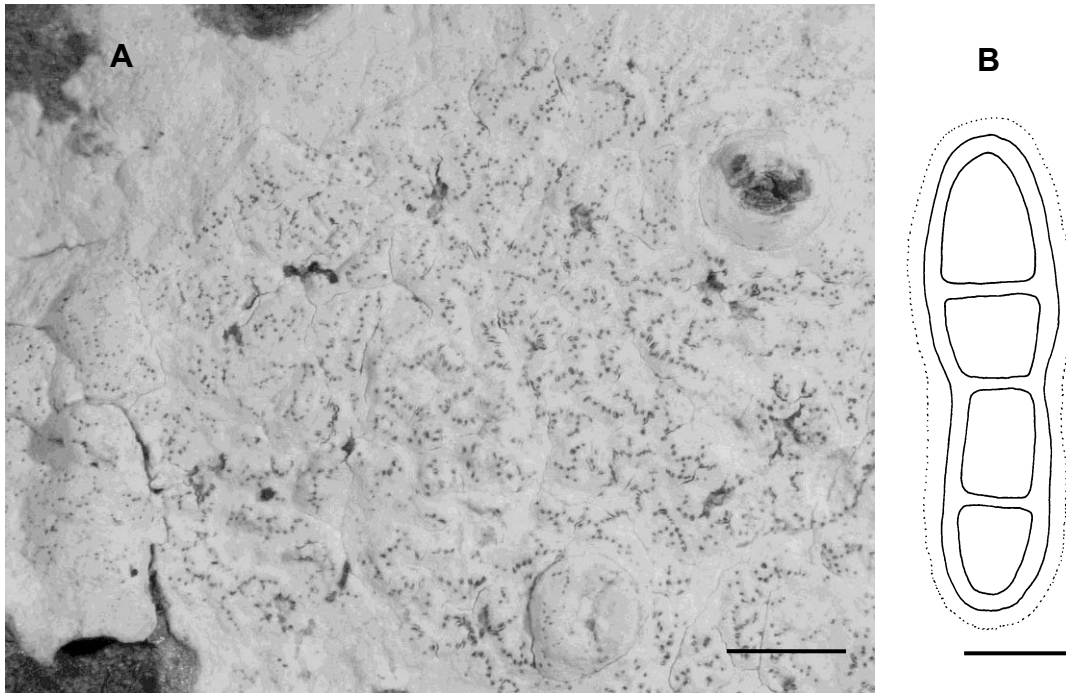


Fig. 2. *Enterographa aldabrensis* (holotype). A, thallus with apothecia; B, mature ascospore. Scales: A=5 mm; B=5 μ m.

the thallus margin, c. 0.1 μ m diam, wall brown-pigmented, K⁻. *Conidia* rod-shaped, 0.7 \times 2.0-2.5 μ m.

Chemistry: Thallus C⁻, K⁺ yellowish, P⁺ yellow, UV⁺ cream-coloured; TLC: psoromic acid; amyloidy: epithecium and excipulum I⁺ and KI⁺ dark blue, hymenium, asci and hypothecium I⁺ red and KI⁺ dark blue.

Distribution and Ecology: Known only from the type locality. Corticolous on coastal trees and shrubs.

Notes: This species is easily recognized by the thin, pale thallus with black punctiform, immersed ascomata arranged in lines. This species is morphologically and chemically very similar to *E. subserialis* (Nyl.) Redinger, but differs in having 3-septate instead of (4-)5-12-septate ascospores, a K⁺ green instead of K⁻ epithecial pigment; it also lacks trace amounts of norstictic acid in the hypothecium (no red needle-shaped crystals are formed in K). It keys out in Sparrius (2004) as *E. elixii* Sparrius, which has elevated, rounded, white-pruinose pseudostromata. *E. compunctula* also has 3-septate ascospores, but contains no substances by TLC and has rounded pseudostromata which do not become confluent.

Additional specimens seen: Seychelles. Aldabra. Cinque Cases, on *Guettarda speciosa*, 1973, leg. R.J. Hnatiuk 730907 [BM ; MRDS114287]; Takamaka Grove, on *Ochna ciliata*, 1973, leg. R.J. Hnatiuk 730747 [BM].

* *Enterographa anguinella* (Nyl.) Redinger
ALDABRA: La Gigi, 1973, S.H.Hnatiuk [BM; MRDS 114288].

Enterographa multiseptata R.Sant.
LA DIGUE: Sparrius 2004: 49; Seaward & Aptroot 2006: 772. MAHÉ: Botanical Gardens, Victoria, 20m, 1973 A. H. Norkett [BM; hb Lücking). PRASLIN: Vězda (*Lichenes Rariores Exsiccati*, fasc.44, no.432 as *E. seychellensis*); Seaward & Aptroot 2006: 772. SILHOUETTE: Seaward & Aptroot 2003: 430 (as *E. seychellensis*), 2006: 772.

Enterographa pallidella (Nyl.) Redinger
ALDABRA: Hnatiuk 1973 [BM]; Seaward et al. 2002: 475; Seaward & Aptroot 2006: 772. ASTOVE: Seaward & Aptroot 2006: 772. MAHÉ: Norkett 1973 [BM]; Sparrius 2004: 50; Seaward & Aptroot 2006: 772. NORTH: Seaward & Aptroot 2006: 772. RONDE: Seaward & Aptroot 2006: 772. SILHOUETTE: Norkett 1973 [BM]; Seaward & Aptroot 2003: 430, 2006: 772 .

* *Enterographa quassiaecola* Fée
MAHÉ: Botanical Gardens, Victoria, 1973, A. H. Norkett [BM].

Enterographa seawardii Lücking & Henssen
MAHÉ: Norkett 1973 [BM]; Sparrius 2004: 56; Seaward & Aptroot 2006: 772. SILHOUETTE: Sparrius 2004: 57; Seaward & Aptroot 2006: 772.

Enterographa subserialis (Nyl.) Redinger
MAHÉ: Norkett 1973 [BM]; Sparrius 2004: 61; Seaward & Aptroot 2006: 772. PRASLIN: Seaward & Aptroot 2006: 772. SILHOUETTE: Norkett 1973 [BM]; Seaward & Aptroot 2003: 430 (as *E. littoralis*); Sparrius 2004: 61; Seaward & Aptroot 2006: 772.

Eremothecella calamicola Syd. in Sydow & Sydow
SILHOUETTE: Seaward & Aptroot 2003: 430, 2006: 772.

Erioderma leylandii (Taylor) Müll.Arg.
MAHÉ: La Misère Road, c.430m, 1973, A. H. Norkett [BM]. SILHOUETTE: Beaver 1993 [MRDS 114296]; Seaward & Aptroot 2003: 430, 2006: 772.

Erythrodictyon malacum (Kremp.) Thor
PRASLIN: Henssen & Thor 1994: 44; Seaward & Aptroot 2006: 772.

* *Eugeniella micrommata* (Kremp.) Lücking, Serus. & Kalb
SILHOUETTE: Pot à Eau, 550m, 1973, A. H. Norkett [BM].

Fellhanera bouteillei (Desm.) Vězda
MAHÉ: Salazie Bridge, 450m, 1973, A. H. Norkett [BM]. SILHOUETTE: Seaward & Aptroot 2003: 431, 2006: 772.

* *Fellhanera bullata* Kalb & Vězda
MAHÉ: Morne Blanc, 600m, 1974, A. H. Norkett [BM].

Fellhanera ivoriensis Lücking & R.Sant.
MAHÉ: on dead wood, Botanical Gardens, Victoria, 1973, A. H. Norkett [BM]. SILHOUETTE: Seaward & Aptroot 2003: 431, 2006: 772.

Fellhanera longispora Lücking
SILHOUETTE: Seaward & Aptroot 2003: 431, 2006: 772.

* *Fellhanera parvula* (Vězda) Vězda
MAHÉ: path to Le Niol Road, 70m, 1974, A. H. Norkett [BM].

Fellhanera rhapidophylli (Rehm) Vězda
MAHÉ: path to Le Niol Road, 70m, 1974, A. H. Norkett [BM]. SILHOUETTE: Norkett 1973 [BM]; Seaward & Aptroot 2003: 431, 2006: 772.

Fellhanera rubida (Müll. Arg.) Lücking
SILHOUETTE: Seaward & Aptroot 2003: 431, 2006: 772.

- Fellhanera silhouettae*** Aptroot & Seaward
SILHOUETTE: Seaward & Aptroot 2003: 431 (as *F. sp.*), 2004: 123, 2006: 772.
- Fellhanera subfuscata*** Lücking
SILHOUETTE: Seaward & Aptroot 2003: 431, 2006: 772.
- * ***Fibrillithecis insignis*** (Zahlbr.) A. Frisch
ALDABRA: on *Tarrena supra-axillaris*, Île Esprit, 1974, R. J. Hnatiuk [BM].
- * ***Fissurina columbina*** (Tuck.) Staiger
ALDABRA: Île Polymnie, 1973, R. J. Hnatiuk [BM].
- Fissurina dumastii*** Fée
MAHÉ: Seaward & Aptroot 2006: 773 (as *Graphis dumastii*).
- * ***Fissurina dumastoides*** (Fink) Staiger
MAHÉ: near reservoir, Le Niol, c.200m, 1973, A. H. Norkett [BM].
- * ***Fissurina egena*** (Nyl.) Nyl.
MAHÉ: Forêt Noir Road, 450m, 1973, A. H. Norkett [BM].
- * ***Gassicurtia coccinea*** Fée
MAHÉ: on *Anacardium occidentale*, cliff walk beyond Dans Iles, 20-30m, 1973, A. H. Norkett [BM; MRDS 114590].
- Gassicurtia subpulcella*** (Vain.) Marbach
MAHÉ: Norkett 1973 [BM]; Seaward & Aptroot 2006: 772.
- * ***Gloeoheppia turgida*** (Ach.) Gyeln.
ALDABRA: of exposed rock, Bassin Flamant, 1973, R. J. Hnatiuk [BM]; Schultz & Aptroot 2008 : 438.
- Glyphis cicatricosa*** Ach.
ALDABRA: Donaldson 1973 [BM] ; Seaward et al. 2002: 475; Seaward & Aptroot 2006: 773. MAHÉ: forest track, Le Niol Road, c.200m, 1973, A. H. Norkett [BM].
- Glyphis scyphulifera*** (Ach.) Staiger
ALDABRA: Hnatiuk 1973 [BM]; Seaward et al. 2002: 475 (as *Gyrostomum scyphuliferum*); Seaward & Aptroot 2006: 773 (as *Gyrostomum scyphuliferum*). MAHÉ: Sans Souci Road, c.30m, 1973, A. H. Norkett [BM]; Beaver 1994 [MRDS 114304]. NORTH: Seaward & Aptroot 2006: 773 (as *Gyrostomum scyphuliferum*). ST ANNE: 1973, A. H. Norkett [BM].
- Graphis analoga*** Nyl.
COUSINE: Seaward & Aptroot 2006: 773 (as *Graphina analoga*). MAHÉ: Dans Iles, 20m, 1973, A. H. Norkett [BM]. RONDE: Seaward & Aptroot 2006: 773 (as *Graphina analoga*). SILHOUETTE: Seaward & Aptroot 2003: 431, 2006: 773 (as *Graphina analoga*).
- Graphis caesiella*** Vain.
ALDABRA: Taylor 1969 [BM]; Hnatiuk 1973 [BM]; Seaward et al. 2002: 475; Seaward & Aptroot 2006: 773. FRÉGATE: Seaward & Aptroot 2006: 773. MAHÉ: Norkett 1973 [BM]; Seaward & Aptroot 2006: 773. NORTH: Seaward & Aptroot 2006: 773.
- * ***Graphis crassilabra*** Müll.Arg.
MAHÉ: Dans Iles, 20m, 1973, A. H. Norkett [BM; ABL].
- * ***Graphis crebra*** Vain.
ALDABRA: on *Sideroxylon inerme*, Cinque Cases, 1973, R. J. Hnatiuk [BM].
- * ***Graphis dracena*** Vain.
MAHÉ: Botanical Gardens, 30m, 1973, A. H. Norkett [BM].
- * ***Graphis furcata*** Fée
MAHÉ: Botanical Gardens, 30m, 1973, A. H. Norkett [BM].

Graphis glaucescens Fée
MAHÉ: on *Cocos nucifera*, Botanical Gardens, Victoria, 1973, A. H. Norkett [BM]. SILHOUETTE: Seaward & Aptroot 2003: 431, 2006: 773.

* ***Graphis glauconigra*** Vain.
MAHÉ: Botanical Gardens, 30m, 1973, A. H. Norkett [BM].

Graphis hiascens (Fée) Lücking & Sipman in ed.
MAHÉ: Sans Souci Road, c.100m, 1973, A. H. Norkett. SILHOUETTE: Seaward & Aptroot 2003: 431, 2006: 773 (as *Graphina hiascens*).

* ***Graphis immersella*** Müll.Arg.
ALDABRA: Takamaka Grove, 1973, A.Donaldson [BM].

* ***Graphis insulana*** (Müll. Arg.) Lücking
SILHOUETTE: path from La Passe to Grande Barbe, c.200m, 1973, A.H.Norkett [BM].

* ***Graphis librata*** C.Knight
ALDABRA: on *Mystroxydon aethiopicum*, Cinque Cases, 1973, R. J. Hnatiuk [BM]. MAHÉ: on *Cocos nucifera*, Botanical Gardens, Victoria, 1973, A.H.Norkett [BM].

Graphis lineola Ach.
ALDABRA: Hnatiuk 1973 [BM]; Seaward et al. 2002: 475; Seaward & Aptroot 2006: 773. ALPHONSE: Seaward & Aptroot 2006: 773. ASTOVE: Seaward & Aptroot 2006: 773. MAHÉ: Norkett 1973 [BM; MRDS 114598]; Seaward & Aptroot 2006: 773. SILHOUETTE: Norkett 1973 [BM]; Seaward & Aptroot 2003: 431, 2006: 773.

* ***Graphis longula*** Kremp.
MAHÉ: Le Niol Road, c.150m, 1973, A. H. Norkett [BM; MRDS 114612].

* ***Graphis marginata*** Raddi
MAHÉ: Congo Rouge, c.700m, 1973, A. H. Norkett [BM; ABL].

* ***Graphis modesta*** Zahlbr.
ALDABRA: Passe Houareau, Malabar, 1969, J.Taylor [BM].

* ***Graphis palmyrensis*** Zahlbr.
ALDABRA: Cinque Cases, 1973, R. J. Hnatiuk [BM].

* ***Graphis persicina*** Meyen & Flotow
ALDABRA: on *Mystroxydon aethiopicum*, Cinque Cases Well, 1973, R. J. Hnatiuk [BM].

Graphis rimulosa (Mont.) Trevis.
MAHÉ: Norkett, 1973 [BM]; Seaward & Aptroot 2006: 773.

* ***Graphis subhiascens*** (Müll.Arg.) Lücking
MAHÉ: on *Cocos nucifera*, Botanical Gardens, Victoria, 1973, A. H. Norkett [BM].

* ***Graphis subserpentina*** Nyl.
MAHÉ: on *Cocos nucifera*, Botanical Gardens, Victoria, 1973, A. H. Norkett [BM].

Gyalideopsis parvula Kalb & Vězda
SILHOUETTE: Seaward & Aptroot 2003: 431, 2006: 773.

Hafellia parastata (Nyl.) Kalb
MAHÉ: Norkett 1973 [BM]; Seaward & Aptroot 2006: 773.

* ***Hemithecium chlorocarpoides*** (Nyl.) Staiger
MAHÉ: Botanical Gardens, Victoria, c.30m, 1973, A. H. Norkett [BM]. SILHOUETTE: path from La Passe to Grande Barbe, 200m, 1973, A. H. Norkett [BM].

Hemithecium chryserveron (Mont.) Trevis.
MAHÉ: Norkett 1973 [BM]; Seaward & Aptroot 2006: 776 (as *Phaeographina chryservera*).

- * *Hemitecium laubertianum* (Fée) Staiger
ALDABRA: on *Ochna ciliata*, Cinque Cases, 1973, R. J. Hnatiuk [BM; MRDS 114278].
- * *Heppia adglutinata* (Kremp.) A.Massal.
ALDABRA: on rock, Gionnet Ridge, 1974, R. J. Hnatiuk [BM].
- Heterodermia japonica* (Sato) Swinscow & Krog
MAHÉ: Krog 1993 [O]; Seaward & Aptroot 2006: 773, 2006: 773.
- Hyperphyscia adglutinata* (Flörke) H.Mayr. & Poelt
COUSINE: Seaward & Aptroot 2006: 773, 2006: 773. MAHÉ: Bel Air Hotel, c.30m, 1973, A. H. Norkett [BM].
- Hyperphyscia syncolla* (Nyl.) Kalb
COUSINE: Seaward & Aptroot 2006: 773, 2006: 773.
- * *Julella lactea* (A.Massal.) M.E.Barr
ALDABRA: Takamaka Camp, Grande Terre, 1969, J.Taylor [BM]; Hnatiuk 1973 [BM; MRDS 114615].
- * *Lasioloma arachnoideum* (Kremp.) R.Sant.
MAHÉ: Grand Bois, 2002, J.Gerlach [MRDS 115553 sub *Lobflammia gabrielis*].
- * *Lasioloma phycophorum* (Vain.) R.Sant.
MAHÉ: Morne Blanc, 1974, A. H. Norkett [BM].
- * *Lecanographa lyncea* (Sm.) Egea & Torrente
ALDABRA: La Gigi, 1973, S.H.Hnatiuk [BM sub *Enterographa anguinella*; MRDS 114288].
- Lecanora achroa* Nyl.
ALDABRA: on *Cocos nucifera*, Île Polymnie, 1973, R. J. Hnatiuk [BM]. SILHOUETTE: Seaward & Aptroot 2003: 431, 2006: 773.
- * *Lecanora argentata* (Ach.) Degel.
ALDABRA: on *Sideroxylon inerme*, Takamaka Landing, 1973, R. J. Hnatiuk [BM].
- Lecanora arthothelinella* Lumbsch
MAHÉ: Seaward & Aptroot 2006: 773. SILHOUETTE: Seaward & Aptroot 2003: 431, 2006: 773.
- * *Lecanora ceylanica* Zahlbr.
MAHÉ: near reservoir, Le Niol, c.200m, 1973, A.H.Norkett [BM].
- Lecanora helva* Stizenb.
ALDABRA: Passe Houareau, Île Malabar, 1969, J.Taylor [BM]; Hnatiuk 1973 [BM] . MAHÉ: on *Cocos nucifera*, Botanical Gardens, Victoria, 1973, A. H. Norkett [BM]. SILHOUETTE: near waterfall from La Passe, c.70m, 1973, A. H. Norkett [BM]. SOURIS: Seaward & Aptroot 2006: 773.
- * *Lecanora leproplaca* Zahlbr.
ALDABRA: Cinque Cases, 1969, J.Taylor [BM sub *Absoconditella delutula*]; Hnatiuk 1973 [BM].
PRASLIN: on trunk of *Drypetes*, Anse Bois de Rose, 1994, K. Beaver [MRDS 114341].
- Lecanora leprosa* Fée
ALDABRA: Hnatiuk 1974 [BM]; Seaward et al. 2002: 475; Seaward & Aptroot 2006: 773. LA DIGUE: Seaward & Aptroot 2006: 773. MAHÉ: Seaward & Aptroot 2006: 773. RONDE: Seaward & Aptroot 2006: 773. SILHOUETTE: Seaward & Aptroot 2003: 432, 2006: 774.
- * *Lecanora symmicta* (Ach.) Ach.
MAHÉ: Anse la Mouche, c.100m, 1973, A. H. Norkett [BM]. SILHOUETTE: near Lagoon, La Passe, 1973, A. H. Norkett [BM].
- Lecanora tropica* Zahlbr.
ALDABRA: Hnatiuk 1973 [BM]; Seaward et al. 2002: 475; Seaward & Aptroot 2006: 774.

* *Lecidopyrenopsis corticola* Vain.

ST JOSEPH: on *Cocos nucifera*, 2003, D. Hill [ABL]; Schultz & Aptroot 2008: 438. SILHOUETTE: on *Mangifera indica*, 2000, Seaward [MRDS 113038]; Schultz & Aptroot 2008: 438.

Leiorreuma exaltatum (Mont. & v.d.Bosch) Staiger

ALDABRA: Île Malabar, 26.10.1992, Harrington (incorrectly determined as *Sarcographa heteroclita* in Seaward et al. 2002 : 476 and Seaward & Aptroot 2006: 779). MAHÉ: Norkett 1973 [BM]; Seaward & Aptroot 2006: 776 (as *Phaeographis exaltata*). SILHOUETTE: Seaward & Aptroot 2003: 434, 2006: 776 (as *Phaeographis exaltata*).

* *Lempholemma polycarpum* M.Schultz

ALDABRA: on limestone rock, Gionnet, 1974, R. J. Hnatiuk [BM]; Schultz & Aptroot 2008: 441.

* *Lepraria multiacida* Aptroot

MAHÉ: in sheltered vertical rock crevice, 1994, K. Beaver [MRDS 114314].

Lepraria pallida Sipman

MAHÉ: Sipman 2004: 33; Seaward & Aptroot 2006: 774.

Lepraria usnica Sipman

CURIEUSE: Seaward & Aptroot 2006: 774. LA DIGUE: Sipman 2004: 33; Seaward & Aptroot 2006: 774. MAHÉ: Norkett 1973 [BM]; Sipman 2004: 33; Seaward & Aptroot 2006: 774. PRASLIN: Sipman 2004: 33; Seaward & Aptroot 2006: 774. SILHOUETTE: Seaward & Aptroot 2003: 432 (as *L. sp.*); Sipman 2004: 33; Seaward & Aptroot 2006: 774.

Leprocaulon arbuscula (Nyl.) Nyl.

MAHÉ: Krog 1993 [O]; Seaward & Aptroot 2006: 774. SILHOUETTE: Seaward & Aptroot 2003: 432, 2006: 774.

Leprocollema novae-caledonicum A. L. Sm.

SILHOUETTE: Seaward & Aptroot 2006: 774.

* *Leptogium austroamericanum* (Malme) C.W.Dodge

MAHÉ: cliff path beyond Dans Iles, 20-30m, 1973, A. H. Norkett [BM]; Beaver 1994 [MRDS 114321]. SILHOUETTE: forest below Corgate, c.400m, 1973, A. H. Norkett [BM; MRDS 114486].

Leptogium azureum (Sw. ex Ach.) Mont.

MAHÉ: Norkett 1973 [BM]; Seaward & Aptroot 2006: 774.

Leptogium corticola (Taylor) Tuck.

MAHÉ: Botanical Gardens, Victoria, 1973, A. H. Norkett [BM]. SILHOUETTE: Seaward & Aptroot 2003: 432, 2006: 774.

Leptogium cyanescens (Rabenh.) Körb.

MAHÉ: on rock, Botanical Gardens, Victoria, c.20m, 1973, A. H. Norkett [BM]; Beaver 1994 [MRDS 114317]. SILHOUETTE: Seaward & Aptroot 2003: 432, 2006: 774.

Leptogium denticulatum Nyl.

MAHÉ: Norkett 1973 [BM]; Seaward & Aptroot 2006: 774. PRASLIN: on side of boulder, Anse Bois de Rose, 1994, K. Beaver [MRDS 114334, 114336, 114337]. SILHOUETTE: forest below Jardin Marron, 250m, 1973, A. H. Norkett [BM].

Letrouitia leprolyta (Nyl.) Hafellner

ALDABRA: on *Mystroxydon aethiopicum*, Cinque Cases, 1973, R. J. Hnatiuk [BM]. SILHOUETTE: Seaward & Aptroot 2003: 432, 2006: 774.

* *Leucodecton compunctum* (Ach.) A.Massal.

ALDABRA: on *Mystroxydon aethiopicum*, Île Esprit, 1973, R. J. Hnatiuk [BM].

* *Leucodecton occultum* (Eschw.) A.Frisch

ALDABRA: on *Mystroxydon aethiopicum*, Cinque Cases, 1973, R. J. Hnatiuk 730493 [BM]; Île Polymnie, on *Apodytes dimidiata*, 10. XI. 1973, R. J. Hnatiuk 730961 [BM].

- * *Leucodecton subcompunctum* (Nyl.) A.Frisch
ALDABRA: on *Apodytes dimidiata*, Île Polymnie, 1973, R. J. Hnatiuk [BM].
- Lichenothelia dendritica* Henssen
LA DIGUE: Henssen 1987: 259; Seaward & Aptroot 2006: 774.
- Lichenothelia globulifera* Henssen
LA DIGUE: Henssen 1987: 260; Seaward & Aptroot 2006: 774.
- Loflammia gabrielis* (Müll.Arg.) Vězda
MAHÉ: Salazie Bridge, 450m, 1973, A. H. Norkett [BM]; Gerlach 2002 [MRDS 115553]. SILHOUETTE:
Seaward & Aptroot 2003: 432, 2006: 774.
- Loflammia intermedia* (R.Sant.) Vězda
SILHOUETTE: Seaward & Aptroot 2003: 432, 2006: 774.
- * *Macentina stigonemoides* Orange
MAHÉ: Botanical Gardens, Victoria, c. 20m, 1973, A. H. Norkett [BM; ABL].
- Malcolmiella granifera* (Ach.) Kalb. & Lücking
MAHÉ: Botanical Gardens, Victoria, c.30m, 1973, A. H. Norkett [BM]. PRASLIN : B'Offay, 1974, A. H. Norkett [BM]. SILHOUETTE: Norkett 1973 [BM; MRDS 114607]; Seaward & Aptroot 2003: 432, 2006: 774.
- Mazosia ocellata* (Nyl.) R.C.Harris
COUSINE: Seaward & Aptroot 2006: 774.
- Megalospora sulphurata* Meyen
MAHÉ: Norkett 1973 [BM]; Seaward & Aptroot 2006: 774.
- * *Megalospora tuberculosa* (Fée) Sipman
MAHÉ: Cascade, Congo Rouge, c.700m, 1973, A. H. Norkett [BM; MRDS 114581].
- * *Megalotremis megalospora* (Vain.) Aptroot
SILHOUETTE: Scott Vale, 350m, 1973, A. H. Norkett [BM].
- Melanotrema meiospermoides* (Hale) A.Frisch
SILHOUETTE: Seaward & Aptroot 2003: 433, 2006: 774 (as *Ocellularia meiospermoides*).
- Melaspilea diplasiospora* (Nyl.) Müll.Arg.
SILHOUETTE: Seaward & Aptroot 2003: 432, 2006: 774.
- Monoblastia rappii* Zahlbr.
COUSINE: Seaward & Aptroot 2006: 774.
- Mycomicrothelia captiosa* (Kremp.) D.Hawksw.
SILHOUETTE: Seaward & Aptroot 2003: 432, 2006: 774.
- * *Myelocomis erumpens* P.M.McCarthy & Elix
MAHÉ: on *Campnosperma*, La Reserve-Brulées, 1994, K. Beaver [MRDS 114331].
- Ocellularia bahiana* (Ach.) A.Frisch
SILHOUETTE: Seaward & Aptroot 2003: 432, 2006: 774 (as *Myriotrema bahianum*).
- Ocellularia chonestoma* (Leight.) Zahlbr.
SILHOUETTE: Seaward & Aptroot 2003: 432, 2006: 774.
- Ocellularia papillata* (Leight.) Zahlbr.
MAHÉ: just below waterfall, Cascade, c.300m, 1973, A. H. Norkett [BM; MRDS 115510]. SILHOUETTE:
Seaward & Aptroot 2003: 433, 2006: 774.
- * *Ocellularia perforata* (Leight.) Müll.Arg.
MAHÉ: just below waterfall, Cascade, c.300m, 1973, A. H. Norkett [BM].

Ochrolechia africana Vain.

MAHÉ: Norkett 1973 [BM; MRDS 114579]; Seaward & Aptroot 2006: 774.

* ***Opegrapha agelaeotera*** Vain.

ALDABRA: on *Polysphaeria multiflora*, Cinque Cases, 1973, R. J. Hnatiuk [BM].

* ***Opegrapha apomelaena*** Kremp.

ALDABRA: on *Clerodendrum*, Île Polymnie, 1973, R. J. Hnatiuk [BM].

* ***Opegrapha arabica*** (Müll.Arg.) Vain.

ALDABRA: Taylor 1969 [BM]; Hnatiuk 1973 [BM]; Taylor [BM]; Ertz & Diederich 2007: 146. FRÉGATE: Seaward & Aptroot 2006: 771 (as *Dictyographa varians*). MAHÉ: Seaward & Aptroot 2006: 771 (as *Dictyographa varians*); Ertz & Diederich 2007: 146.

* ***Opegrapha medusulina*** Nyl.

ALDABRA: on *Ficus reflexa*, Cinque Cases, 1973, R. J. Hnatiuk [BM]. MAHÉ: Seaward & Aptroot 2006: 775 (as *Opegrapha* sp. 3). SILHOUETTE: on *Calophyllum*, NNW of La Passe, 2000, MRDS [MRDS 115168].

* ***Opegrapha subvulgata*** Nyl.

ALDABRA: Seaward et al. 2002: 475 (as *Opegrapha* sp.); Seaward & Aptroot 2006: 775 (as *Opegrapha* sp. 1). NORTH: Seaward & Aptroot 2006: 774 (as *O. viridis*). SILHOUETTE: Seaward & Aptroot 2003: 433, 2006: 774 (as *O. viridis*).

Opegrapha vegae R.Sant.

MAHÉ: near Sans Souci Road, 120m, 1973, A. H. Norkett [BM]. PRASLIN: Norkett 1974 [BM]; Vězda (*Lichenes Rariores Exsiccati*, fasc.43, no.425); Seaward & Aptroot 2006: 774. SILHOUETTE: Seaward & Aptroot 2003: 433; Seaward & Aptroot 2006: 774.

Opegrapha viridistellata Sérus., Lücking & Sparrius

SILHOUETTE: Seaward & Aptroot 2003: 433, 2006: 775.

Parmeliella brisbanensis (C.Knight) P.M.Jørg. & D.J.Galloway

CURIEUSE: Seaward & Aptroot 2006: 775. GRANDE SOEUR: Seaward & Aptroot 2006: 775. LA DIGUE: Seaward & Aptroot 2006: 775. MAHÉ: Norkett 1973 [BM]; Krog 1993 [O]; Beaver 1994 [MRDS 11462]; Seaward & Aptroot 2006: 775. PRASLIN: Glacis Noir, c.320m, 1973, A. H. Norkett [BM; MRDS 114510]; Krog 1993 [O]. SILHOUETTE: Norkett 1973 [BM]; Seaward & Aptroot 2003: 433, 2006: 775.

Parmeliella mariana (Fries) P.M.Jørg. & D.J.Galloway

CONCEPTION: Seaward & Aptroot 2006: 775. MAHÉ: Seaward & Aptroot 2006: 775. SILHOUETTE: Norkett 1973 [BM]; Beaver 1993 [MRDS 114297]; Seaward & Aptroot 2003: 433, 2006: 775.

Parmelinella wallichiana (Taylor) Elix & Hale

MAHÉ: Seaward & Aptroot 2006: 775.

Parmotrema aldabrense (Dodge) Hale

ALDABRA: Taylor 1969 [BM]; Hnatiuk 1973 [BM]; Dodge 1959: 160 (as *Parmelia aldabrensis* Dodge); Hale 1965: 321; Krog; Krog & Swinscow 1981: 166; Swinscow & Krog 1988: 165; Seaward et al. 1996: 32; Seaward et al. 2002: 475; Seaward & Aptroot 2006: 775.

Parmotrema cristiferum (Taylor) Hale

Loc.non cit. (Nylander 1885: 608 as *Parmelia flavescens*); see also Krempelhuber (*Regensb. Flora* 1869: 223 as *P. glaberrima* or *P. lactissima*) and Hue (1892: 74); Seaward & Aptroot 2006: 775. LA DIGUE: Seaward & Aptroot 2006: 775. MAHÉ: Norkett 1973 [BM]; Morgan 1972 [MRDS 109621]; Krog 1993 [O]; Seaward & Aptroot 2006: 775. PRASLIN: Glacis Noir, c.320m, 1973, A. H. Norkett [BM]; Krog 1993 [O]. SILHOUETTE: Norkett 1973 [BM; MRDS 114488]; Beaver 1993 [MRDS 114291]; Seaward & Aptroot 2003: 433, 2006: 775.

Parmotrema gardneri (C.W.Dodge) Sérus.

MAHÉ: Krog 1993 [O]; Seaward & Aptroot 2006: 775.

* ***Parmotrema pseudograyanum*** (Hale) Sérus.

SILHOUETTE: La Passe-Grande Barbe, 1993, K. Beaver [MRDS 114292].

* *Parmotrema subcorallinum* (Hale) Hale

MAHÉ: summit of Congo Rouge, c.800m, 1973, A. H. Norkett [BM; MRDS 114597]; Krog 1993 [O].

Parmotrema tinctorum (Delise ex Nyl.) Hale

ALDABRA: on *Sideroxylon inerme*, Île aux Cedres, 1974, R. J. Hnatiuk [BM ; MRDS 114013] . MAHÉ: Norkett 1993 [BM; MRDS 114367]; Krog 1993 [O]; Seaward & Aptroot 2006: 775. PRASLIN: Anse Citron, 1993, H.Krog [O]. SILHOUETTE: Norkett 1993 [BM; MRDS 114367]; Seaward & Aptroot 2003: 433, 2006: 775.

Parmotrema zollingeri (Hepp) Hale

SILHOUETTE: Seaward & Aptroot 2003: 433, 2006: 775.

Paulia aldabrensis Henssen

ALDABRA: Hnatiuk 1973 [BM]; Rutter 1977 [BM]; Henssen 1986: 221; Seaward et al. 2002: 475; Seaward & Aptroot 2006: 775; Schultz & Aptroot 2008 : 444.

* *Paulia nitidula* (Müll.Arg.) M.Schultz

ALDABRA: on limestone, Dune de Messe, 1973, R. J. Hnatiuk [BM]; Schultz & Aptroot 2008: 445.

* *Peccania* cf. *tiruncula* (Nyl.) Henssen

ALDABRA: on exposed rock, Bassin Flamant, 1973, R. J. Hnatiuk [BM].

* *Peltula bolanderi* (Tuck.) Wetmore

ALDABRA: on rock, Île Esprit, 1974, R. J. Hnatiuk [BM].

Peltula euploca (Ach.) Poelt ex Pisut

NORTH: Seaward & Aptroot 2006: 775. SILHOUETTE: Seaward & Aptroot 2003: 433, 2006: 775.

Peltula placodizans (Zahlbr.) Wetmore

NORTH: Seaward & Aptroot 2006: 775. SILHOUETTE: Seaward & Aptroot 2003: 433, 2006: 775.

Peltula tortuosa (Nees) Wetmore

NORTH: Seaward & Aptroot 2006: 775.

Pertusaria muricata J.C.David

SILHOUETTE: Seaward & Aptroot 2006: 775.

Pertusaria subpertusa Brodo

MAHÉ: Seaward & Aptroot 2006: 775. SILHOUETTE: Seaward & Aptroot 2003: 433, 2006: 776.

Pertusaria cf. *subventosa* Malme

MAHÉ: Ridge of Brulée, c.350m, 1973, A. H. Norkett [BM]. SILHOUETTE: Seaward & Aptroot 2003: 433 (as *P. tropica*); Seaward & Aptroot 2006: 776.

Pertusaria cf. *texana* Müll.Arg.

ALDABRA: on *Cocos nucifera*, Île Polymnie, 1973, R. J. Hnatiuk [BM]. MAHÉ: on *Cocos nucifera* near shore, Dans Iles, 1973, A. H. Norkett [BM]. SILHOUETTE: Seaward & Aptroot 2003: 433 Seaward & Aptroot 2006: 776.

Pertusaria velata (Turner) Nyl.

MAHÉ: Norkett 1973 [BM]; Seaward & Aptroot 2006: 776.

Pertusaria cf. *xanthostoma* (Sommerf.) Fr.

ALDABRA: Seaward et al. 2002: 475 ; Seaward & Aptroot 2006: 776.

* *Phaeographis intricans* (Nyl.) Vain.

MAHÉ: La Misère Road, c.430m, 1973, A. H. Norkett [BM]. SILHOUETTE: path from La Passe to Grande Barbe, c.430m, 1973, A. H. Norkett [BM; MRDS 114519].

* *Phaeographis inusta* (Ach.) Müll.Arg.

ALDABRA: Île Polymnie, 1973, R. J. Hnatiuk [BM].

* *Phaeographis lindigiana* Müll.Arg.

MAHÉ: Botanical Gardens, 30m, 1973, A. H. Norkett [BM].

Phaeographis planiuscula (Mont.) Müll.Arg.

PRASLIN: Vězda (*Lichenes Rariores Exsiccati*, fasc.43, no.429); Seaward & Aptroot 2006: 776.

* ***Phaeographis* cf. *punctiformis*** (Eschw. in Martius) Müll.Arg.

MAHÉ: Anse la Mouche, c.100m, 1973, A. H. Norkett [BM]. SILHOUETTE: path from La Passe to Grande Barbe, 200m, 1973, A. H. Norkett [BM].

Phyllopetula corticola (Büdel & R.Sant.) Kalb

ALDABRA: on dead wood, Bassin Flamant, 1973, R. J. Hnatiuk [BM]. BIRD: Seaward & Aptroot 2006: 776.

* ***Phyllopsora borbonica*** Timdal & Krog

MAHÉ: on *Cinnamomum*, Mare aux Cochons, 1994, K. Beaver [MRDS 114307].

* ***Phyllopsora buettneri*** (Müll.Arg.) Zahlbr.

MAHÉ: Old Mission, Forêt Noir Road, 350m, 1973, A. H. Norkett [BM].

* ***Phyllopsora* cf. *confusa*** Swinscow & Krog

PRASLIN : Grand Anse, c.100m, 1974, A. H. Norkett [BM].

Phyllopsora corallina (Eschw.) Müll.Arg.

MAHÉ: Norkett 1973 [BM; MRDS 114401]; Timdal & Krog 2001: 76; Seaward & Aptroot 2006: 776.

SILHOUETTE: Norkett 1973 [BM]; Seaward & Aptroot 2003: 434, 2006: 776.

Physcia aipolia (Ehrh. ex Humb.) Fürnr.

PRASLIN: Seaward & Aptroot 2006: 776.

Physcia atrostriata Moberg

ALDABRA: Seaward et al. 1996: 32, 2002: 475; Seaward & Aptroot 2006: 776. BIRD: Seaward & Aptroot 2006: 776. LA DIGUE: Seaward & Aptroot 2006: 776. MAHÉ: Seaward & Aptroot 2006: 776. PRASLIN: Fond B'Offay, 1974, A. H. Norkett [BM]. SILHOUETTE: Seaward & Aptroot 2003: 434, 2006: 776.

* ***Physcia dimidiata*** (Arnold) Nyl.

ALDABRA: Anse Mais, 1973, R. J. Hnatiuk [BM; MRDS 114274]. MAHÉ: Bel Air Hotel, c.30m, 1973, A. H. Norkett [BM].

* ***Physcia erumpens*** Moberg

MAHÉ: on Dans Iles, 30m, 1973, A. H. Norkett [BM]. ST ANNE: 1973, A.H.Norkett [BM].

* ***Physcia integrata*** Nyl.

MAHÉ: cliff walk, Dans Iles, c.40m, 1973, A. H. Norkett [BM].

* ***Physcia* cf. *krogiae*** Moberg

MAHÉ: E slope of Trois Frères, 210-240m, 1993, H.Krog [O].

Physcia sorediosa (Vain.) Lyngé

ALDABRA: Hnatiuk 1973 [BM]; Seaward et al. 1996: 32; Seaward et al. 2002: 475; Seaward & Aptroot 2006: 776. ALPHONSE: Seaward & Aptroot 2006: 776. CURIEUSE: Seaward & Aptroot 2006: 776. DESROCHES: Seaward & Aptroot 2006: 776. FARQUHAR: Seaward & Aptroot 2006: 776. FOUQUET: Seaward & Aptroot 2006: 776. MAHÉ: Norkett 1973 [BM]; Krog 1993 [O]; Seaward & Aptroot 2006: 776. MOYENNE: Seaward & Aptroot 2006: 776. PRASLIN: Plaine Hollandaise, c.200m, 1974, A.H.Norkett [BM]; Krog 1993 [O]. RONDE: Seaward & Aptroot 2006: 776. SILHOUETTE: Seaward & Aptroot 2003: 434, 2006: 776. THERÈSE: Seaward & Aptroot 2006: 776.

Physma byrsaeum (Ach.) Tuck.

ALDABRA: on *Sideroxylon inerme*, Gionnet, 1973, R. J. Hnatiuk [BM]. MAHÉ: Norkett 1973 [BM]; Krog 1993 [O]; Seaward & Aptroot 2006: 776.

* ***Platygramme discurrens*** (Nyl.) Staiger

ALDABRA: Takamaka Grove, 1973, A.Donaldson [BM].

* ***Polymeridium proponens*** (Nyl.) R.C.Harris

MAHÉ: Salazie Bridge, Forêt Noir Road, c.450m, 1973, A. H. Norkett [BM].

- * *Polymeridium quinqueseptatum* (Nyl.) R.C.Harris
ALDABRA: on *Premna obtusifolia*, Cinque Cases, 1973, R. J. Hnatiuk [BM].
- * *Porina aenea* (Wallr.) Zahlbr.
SILHOUETTE: path from La Passe to Grande Barbe, c.200m, A. H. Norkett [BM].
- * *Porina* cf. *borreri* (Trevis.) D.Hawksw. & P.James
SILHOUETTE: forest near Jardin Marron, c.300m, 1973, A. H. Norkett [BM].
- Porina conica* R.Sant.
SILHOUETTE: Seaward & Aptroot 2003: 434, 2006: 777.
- Porina conspersa* Malme
MAHÉ: Seaward & Aptroot 2006: 777. NORTH: Seaward & Aptroot 2006: 777. SILHOUETTE: Seaward & Aptroot 2003: 434, 2006: 777.
- Porina corruscans* (Rehm) R.Sant.
PRASLIN: Vězda (*Lichenes Rariores Exsiccati*, fasc.43, no.422); Seaward & Aptroot 2006: 777.
- * *Porina distans* Vězda & Vivant
MAHÉ: Botanical Gardens, Victoria, c.20m, 1973, A. H. Norkett [BM].
- Porina epiphylla* Fée
SILHOUETTE: Seaward & Aptroot 2003: 434, 2006: 777.
- * *Porina farinosa* C.Knight
SILHOUETTE: on *Dillenia*, Pot à Eau Ridge, c.500m, 1973, A. H. Norkett [BM; MRDS 114511].
- * *Porina internigrans* (Nyl.) Müll.Arg.
PRASLIN: Vallée de Mai, c.200m, 1974, A. H. Norkett [BM]. SILHOUETTE: on *Dillenia*, Scott Vale, c.350m, A. H. Norkett [BM].
- * *Porina karnatakensis* Makhija, Adaw. & Patw.
SILHOUETTE: Mt Dauban, 740m, 2002, J.Gerlach [MRDS 110604 sub *P. subnitidula*].
- * *Porina leptalea* (Durieu & Mont.) A.L.Sm.
MAHÉ: on quartz, summit of Morne Blanc, c.650m, 1974, A. H. Norkett [BM].
- Porina lucida* R.Sant.
SILHOUETTE: Seaward & Aptroot 2003: 434, 2006: 777.
- Porina mastoidea* (Ach.) Müll.Arg.
MAHÉ: Botanical Gardens, Victoria, c.10m, 1973, A. H. Norkett [BM]. SILHOUETTE: Beaver 1993 [MRDS 114294]; Seaward & Aptroot 2003: 434, 2006: 777.
- Porina nitidula* Müll.Arg.
SILHOUETTE: Seaward & Aptroot 2003: 434, 2006: 777.
- Porina nucula* Ach.
ALDABRA: on *Ficus reflexa*, Cinque Cases, 1973, R. J. Hnatiuk [BM]. MAHÉ: Botanical Gardens, Victoria, c.30m, 1973, A. H. Norkett [BM]. PRASLIN: Fond B'Offay, 1974, A. H. Norkett [BM]. SILHOUETTE: Norkett 1973 [BM]; Seaward & Aptroot 2003: 434, 2006: 777.
- Porina perminuta* Vain.
MAHÉ: Botanical Gardens, Victoria, 20m, 1973, A. H. Norkett [BM]. NORTH: Seaward & Aptroot 2006: 777. PRASLIN: Vězda (*Lichenes Rariores Exsiccati*, fasc.43, no.421); Seaward & Aptroot 2006: 777.
- * *Porina rufula* (Kremp.) Vain.
MAHÉ: main path, Morne Seychellois, 800m, 1973, A. H. Norkett [BM; herb.Lücking].
- * *Porina subinterstes* (Nyl.) Müll.Arg.
MAHÉ: St Louis River, c.60m, 1973, A. H. Norkett [BM].

* *Porina subnitidula* Colín & Peña

MAHÉ: La Poudrière Road, 30m, 1973, A. H. Norkett [BM]. PRASLIN: Forest Station, Fond B'Offay, c.150m, 1974, A. H. Norkett [BM]. SILHOUETTE: forest below Corgate, 400m, A. H. Norkett [BM]; Gerlach 2000 [MRDS 110604].

* *Porina tetracerae* (Ach.) Müll.Arg.

MAHÉ: path to St Louis Road, Bel Air, c.100m, 1973, A. H. Norkett [BM]. PRASLIN: Forest Station, Fond B'Offay, c.150m, 1974, A. H. Norkett [BM].

Porina uluguruensis Vězda

SILHOUETTE: Seaward & Aptroot 2003: 435, 2006: 777.

Pseudocyphellaria argyracea (Delise) Vain.

MAHÉ: Norkett 1973 [BM]; Krog 1993 [O]; Seaward & Aptroot 2006: 777. SILHOUETTE: Pot à Eau Ridge, c.550m, 1973, A. H. Norkett [BM]; Seaward & Aptroot 2003: 435, 2006: 777.

* *Pseudopeltula dicyanophora* Henssen

ALDABRA: on exposed limestone rock, Bassin Flamant, 1973, R. J. Hnatiuk [BM].

Pseudopyrenula diluta (Fée) Müll.Arg.

MAHÉ: Seaward & Aptroot 2006: 777.

Pseudopyrenula subnudata Müll.Arg.

MAHÉ: Norkett 1973 [BM]; Seaward & Aptroot 2006: 777. PRASLIN: Glacis Noir, c.320m, 1974, A. H. Norkett [BM].

Psoroglaena cf. *costaricensis* Henssen

MAHÉ: Henssen 1995: 200, 202; Seaward & Aptroot 2006: 777.

Psoroglaena cubensis Müll.Arg.

MAHÉ: Eriksson 1992: 13; Henssen 1995: 203; Seaward & Aptroot 2006: 777.

* *Psorotichia hassei* Fink

ALDABRA: open limestone, Anse Mais 1973, Hnatiuk [BM; MRDS 114484]; Schultz & Aptroot 2008: 451. MAHÉ: open ridge, Anse Vars, 1973, Norkett [BM]; Schultz & Aptroot 2008: 451.

Psorotichia polyspora M.Schultz & Büdel

SILHOUETTE: Seaward & Aptroot 2003: 435, 2006: 777; Schultz & Aptroot 2008: 452.

Pulvinodecton seychellensis Henssen & G.Thor

PRASLIN: Henssen & Thor 1998: 115; Seaward & Aptroot 2006: 777.

Pyrenula aggregans Vain.

SILHOUETTE: Seaward & Aptroot 2003: 435, 2006: 777.

Pyrenula astroidea (Fée) R.C.Harris

ALDABRA: Hnatiuk 1973 [BM]; Seaward et al. 2002: 475; Seaward & Aptroot 2006: 777. MAHÉ: top of Brilliant River Gorge, c.330m, 1973, A. H. Norkett [BM].

Pyrenula concatervans (Nyl.) R.C.Harris

ALDABRA: Hnatiuk 1973 [BM]; Seaward et al. 2002: 476; Seaward & Aptroot 2006: 777. MAHÉ: Sans Souci Road, c.100m, 1973, A. H. Norkett [BM]. PRASLIN: Glacis Noir, c.320m, 1974, A. H. Norkett [BM, sub *Pseudopyrenula subnudata*]. SILHOUETTE: Seaward & Aptroot 2003: 435, 2006: 777.

Pyrenula confinis (Nyl.) R.C.Harris

ALDABRA: Taylor 1969 [BM]; Hnatiuk 1973 [BM]; Seaward et al. 1996: Seaward et al. 2002: 476; Seaward & Aptroot 2006: 777. MAHÉ: Botanical Gardens, Victoria, c.30m, 1973, A. H. Norkett [BM]. PRASLIN: Seaward & Aptroot 2006: 777. SILHOUETTE: Seaward & Aptroot 2003: 435, 2006: 777.

Pyrenula leucostoma Ach.

ALDABRA: on *Sideroxylon inerme*, Cinque Cases, 1973, R. J. Hnatiuk [FH]. MAHÉ: path up Crève Coeur, c.250m, 1973, A. H. Norkett [BM]. SILHOUETTE: Seaward & Aptroot 2003: 435, 2006: 777.

Pyrenula macularis (Zahlbr.) R.C.Harris

ALDABRA: Hnatiuk 1973 [BM]; Seaward et al. 2002: 476; Seaward & Aptroot 2006: 777. MAHÉ: Bel Air Hotel, c.30m, 1973, A. H. Norkett [BM]. PRASLIN: on *Drypetes*, Anse Bois de Rose, 1994, K. Beaver [MRDS 114344]. SILHOUETTE: Seaward & Aptroot 2003: 435, 2006: 777.

Pyrenula massariospora (Starb.) R.C.Harris

SILHOUETTE: Seaward & Aptroot 2003: 435, 2006: 777.

Pyrenula microcarpa Müll.Arg.

ALDABRA: on *Thespesia populneoides*, Cinque Cases, 1973, R. J. Hnatiuk [BM]. DESROCHES: Seaward & Aptroot 2006: 777. GRANDE SOEUR: Seaward & Aptroot 2006: 777. MAHÉ: Norkett 1973 [BM]; Seaward & Aptroot 2006: 777. NORTH: Seaward & Aptroot 2006: 777. PRASLIN: Glacis Noir, c.300m, 1974, A. H. Norkett [BM]. ST ANNE: 1973, A. H. Norkett [BM]. SILHOUETTE: Norkett 1973 [BM]; Seaward & Aptroot 2003: 435, 2006: 777.

Pyrenula ochraceoflava (Nyl.) R.C.Harris

ALDABRA: Hnatiuk 1973 [BM]; Seaward et al. 2002: 476; Seaward & Aptroot 2006: 777. ALPHONSE: Seaward & Aptroot 2006: 777. FRÉGATE: Seaward & Aptroot 2006: 777. GRANDE SOEUR: Seaward & Aptroot 2006: 778. LA DIGUE: Seaward & Aptroot 2006: 778. MAHÉ: Norkett 1973 [BM]; Seaward & Aptroot 2006: 778. NORTH: Seaward & Aptroot 2006: 778. PRASLIN: Norkett 1974 [BM]; Seaward & Aptroot 2006: 778. ST JOSEPH: Seaward & Aptroot 2006: 778. SILHOUETTE: Norkett 1973 [BM]; Seaward & Aptroot 2003: 435, 2006: 778.

Pyrenula parvinuclea (Meyen & Flotow) Aptroot

ALDABRA: on *Pandanus*, Cinque Cases, 1969, J.Taylor [BM]; Hnatiuk 1973 [BM]. MAHÉ: Norkett 1973 [BM]; Seaward & Aptroot 2006: 778. NORTH: Seaward & Aptroot 2006: 778. PRASLIN: Seaward & Aptroot 2006: 778. SILHOUETTE: Norkett 1973 [BM]; Seaward & Aptroot 2003: 435, 2006: 778.

* ***Pyrenula pyrenuloides*** (Mont.) R.C.Harris

ALDABRA: on *Calliandra alternans*, Gionnet, 1974, R. J. Hnatiuk [BM]. MAHÉ: Bel Air Road, c.100m, 1973, A. H. Norkett [BM].

* ***Pyrenula quassiaecola*** Fée

ALDABRA: on *Cocos nucifera*, Anse Polymnie, 1973, R. J. Hnatiuk [BM].

Pyrenula santensis (Nyl.) Müll.Arg.

MAHÉ: Seaward & Aptroot 2006: 778.

Pyrenula subcongruens Müll.Arg.

MAHÉ: Seaward & Aptroot 2006: 778 (as *P. pileata*).

* ***Pyrenula subferruginea*** (Malme) R.C.Harris

ALDABRA: on *Ficus nautarum*, Cinque Cases, 1973, R. J. Hnatiuk [BM].

* ***Pyrenula* cf. *thelomorpha*** Tuck.

ALDABRA: on *Apodytes dimidiata*, Île Polymnie, 1973, R. J. Hnatiuk [BM; MRDS 114064].

Pyrgillus javanicus (Mont. & v.d.Bosch) Nyl.

MAHÉ: on *Albizia*, Botanical Gardens, Victoria, c.30m, 1973, A. H. Norkett [BM]. PRASLIN: Norkett 1974 [BM]; Vězda (*Lichenes Rariores Exsiccati*, fasc.44, no.433); Seaward & Aptroot 2006: 778.

* ***Pyrrhospora fuscisidiata*** Aptroot & Wolseley

MAHÉ: Dans Iles, 20m, 1973, A. H. Norkett [BM; ABL].

* *Pyrrhospora palmicola* Aptroot & Seaward, sp. nov.

Pyrrhospora thallo flavo, acidum xanthonicum forsan thiophanicum continente, apotheciis pallido fuscis vel nigris.

TYPE: SEYCHELLES. Aldabra: on *Cocos nucifera*, Anse Mais, 1974, R. J. Hnatiuk 731349 [BM holotype; ABL isotype].

(Fig. 3)

Thallus corticolous, bright citrine-yellow to greenish-yellow or straw-coloured, up to 1 cm diam.

Apothecia sessile, round to irregular in outline due to accessory apothecia, 0.2-0.4 mm diam. Disc pale brown to usually fuscous brown to black, flat to convex, dull, sometimes with a thin layer of white pruina. Apothecium margin hardly prominent to evanescent, level with the disc, c. 0.1 mm wide, often becoming excluded. Excipulum in section largely orange-brown, pale brown inside. *Hypothecium* orange-brown, c. 20 µm high. *Hymenium* sparingly anastomosing, not interspersed, c. 50-70 µm high. *Epihymenium* orange-brown, with numerous relatively large crystals, c. 5 µm high, crystals in KOH dissolving revealing slightly swollen paraphysis tips with the upper 1-2 cells grey tinted. *Ascospores* 8/ascus, ellipsoid, 14-16 × 5-6 µm, wall nearly 1 µm wide.

Chemistry: a xanthone, most probably thiophanic acid; thallus UV+ pink, C+ orange.

Distribution and Ecology: Known only from the type locality. Corticolous on coastal trees and shrubs.

Notes: This is the first *Pyrrhospora* with a yellow, C+ orange thallus but without soredia. This species is probably closely related to *P. querneae*, with which it shares the xanthenes and the small, pale to dark apothecia.

Additional specimen seen. Aldabra, on *Cocos nucifera*, Research Station, 1974, R. J. Hnatiuk 731615 [MRDS 114620 Paratype].

Pyxine berteriana (Fée) Imshaug

ALDABRA: Seaward et al. 1996: 32; Seaward et al. 2002: 476; Seaward & Aptroot 2006: 778.

Pyxine coxae (Sw.) Nyl.

ALDABRA: Taylor 1969 [BM]; Hnatiuk 1973 [BM]; Seaward et al. 1996: 32; Seaward et al. 2002: 476; Seaward & Aptroot 2006: 778. ALPHONSE: Seaward & Aptroot 2006: 778. BIRD: Seaward & Aptroot 2006: 778. COUSINE: Seaward & Aptroot 2006: 778. D'ARROS: Seaward & Aptroot 2006: 778. DESROCHES: Seaward & Aptroot 2006: 778. MAHÉ: Norkett 1973 [BM]; Krog 1993 [O]; Seaward & Aptroot 2006: 778. NORTH: Seaward & Aptroot 2006: 778. ST JOSEPH: Seaward & Aptroot 2006: 778. SILHOUETTE: Seaward & Aptroot 2003: 435, 2006: 778. SOURIS: Seaward & Aptroot 2006: 778.

Pyxine copelandii Vain.

ALDABRA: W of Hdoul Point, 1968, S.A.Renvoize [BM]; Hnatiuk 1973 [BM]. LA DIGUE: Seaward & Aptroot 2006: 778. MAHÉ: Norkett 1973 [BM]; Krog 1993 [O]; Seaward & Aptroot 2006: 778. PRASLIN: Anse Takamaka, 1993, H.Krog [O]. SILHOUETTE: Seaward & Aptroot 2003: 436, 2006: 778.

* *Pyxine coralligera* Malme

ALDABRA: on *Cocos nucifera*, Research Station, 1974, R. J. Hnatiuk [BM].

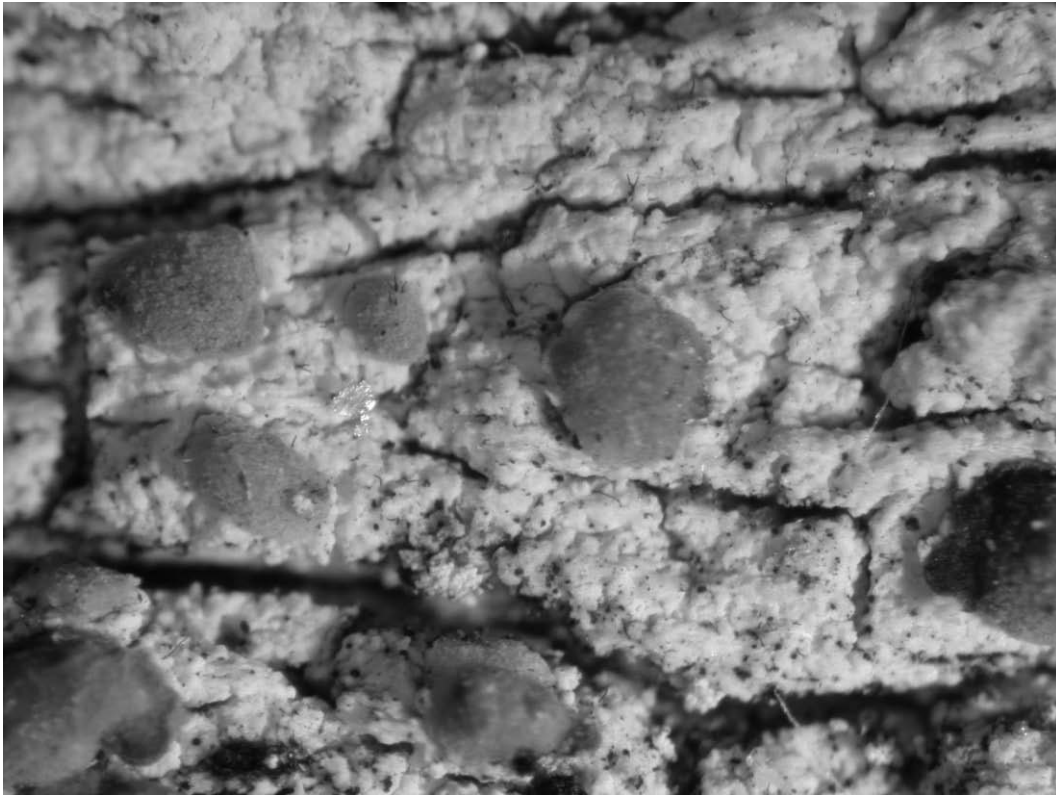


Fig. 3. *Pyrrhospora palmicola* (holotype), thallus with apothecia.

Pyxine farinosa Kashiw.

SILHOUETTE: Beaver 1993 [MRDS 114293]; Seaward & Aptroot 2003: 436, 2006: 778.

* ***Pyxine petricola*** Nyl.

ALDABRA: Passe Houareau, Île Malabar, 1969, J.Taylor [BM sub. *P.cocoes*].

Pyxine reticulata (Vain.) Vain.

MAHÉ: Seaward & Aptroot 2006: 778.

Pyxine retirugella Nyl.

ALDABRA: Taylor 1969 [BM]; Hnatiuk 1973 [BM]; Seaward et al. 2002: 476 (as *P. consocians*); Seaward & Aptroot 2006: 778. CURIEUSE: Seaward & Aptroot 2006: 778. LA DIGUE: Seaward & Aptroot 2006: 778. MAHÉ: Norkett 1973 [BM; MRDS 114360]; Krog 1993 [O]; Seaward & Aptroot 2006: 778. PRASLIN: Krog 1993 [O]; Seaward & Aptroot 2006: 779. ST ANNE: 1973, A. H. Norkett [BM ; MRDS 114366]. SILHOUETTE: Norkett 1973 [BM]; Seaward & Aptroot 2003: 436 (as *P. consocians*); Seaward & Aptroot 2006: 779.

Pyxine sorediata (Ach.) Mont. in Sagra

NORTH: Seaward & Aptroot 2006: 779. SILHOUETTE: Seaward & Aptroot 2003: 436, 2006: 779.

Pyxine subcinerea Stirt.

ALDABRA: Passe Houareau, 1974, R. J. Hnatiuk [BM]. MAHÉ: on *Cocos nucifera*, NE Point, 1973, A.H.Norkett [BM]; Krog 1993 [O]; Beaver 1994 [MRDS 114303]. PRASLIN: Anse Takamaka, 1993, H. Krog [O]. ST ANNE: 1973, A.H. Norkett [BM]. SILHOUETTE: Seaward & Aptroot 2003: 436, 2006: 779.

Ramalina celastri (Spreng.) Krog & Swinscow

SILHOUETTE: Seaward & Aptroot 2003: 436, 2006: 779.

* *Ramalina dendriscoides* Nyl.

MAHÉ: on horizontal rock surfaces, Ridge of Brulée, c.350m, 1973, A. H. Norkett [BM; MRDS 114611; ABL].

Ramalina fecunda Krog & Swinscow

CURIEUSE: Seaward & Aptroot 2006: 779. LA DIGUE: Beaver 1994 [MRDS 114346]; Seaward & Aptroot 2006: 779. MAHÉ: Norkett 1973 [BM]; Seaward & Aptroot 2006: 779 (also incorrectly as *R. arabum*). ST ANNE: 1973, A.H.Norkett [BM]. ST FRANCOIS: Seaward & Aptroot 2006: 779. SILHOUETTE: Norkett 1973 [BM]; Seaward & Aptroot 2003: 436, 2006: 779 (incorrectly as *R. arabum*).

Ramalina nervulosa (Müll.Arg.) des Abb.

ALDABRA: Taylor 1969 [BM]; Hnatiuk 1973 [BM]; Seaward et al. 2002: 476; Seaward & Aptroot 2006: 779. ST FRANCOIS: Seaward & Aptroot 2006: 779.

* *Ramalina sprengelii* Krog & Swinscow

MAHÉ: wood near Anse Souillac, c.10m, 1973, A. H. Norkett [BM].

Relicina abstrusa (Vain.) Hale

MAHÉ: Norkett 1973 [BM; MRDS 114399]; Krog 1993 [O]; Seaward & Aptroot 2006: 779. PRASLIN: Anse Citron, 1993, H.Krog [O].

* *Relicina sydneyensis* (Gyeln.) Hale

MAHÉ: on exposed ridge, 'Helvetia', c.430m, 1973, A. H. Norkett [BM].

Rinodina colobinoides (Nyl.) Zahlbr.

ALDABRA: on *Cocos nucifera*, Anse Mais, 1974, R. J. Hnatiuk [BM]. NORTH: Seaward & Aptroot 2006: 779. ST ANNE: 1973, A.H.Norkett [BM]. SILHOUETTE: Seaward & Aptroot 2003: 436, 2006: 779.

Rinodina guianensis Aptroot

MAHÉ: cliff walk, Dans Iles, 1973, A. H. Norkett [BM]. MOYENNE: Seaward & Aptroot 2006: 779.

* *Rinodina neglecta* Aptroot

ALDABRA: on *Erythroxylum acranthum*, Cinque Cases, 1973, R. J. Hnatiuk [BM].

Rinodina perminuta Groenhart ex Mayrh.

SILHOUETTE: Seaward & Aptroot 2003: 436, 2006: 779.

Roccella endocrocea M.Choisy

ALDABRA: Taylor 1969 [BM]; Hnatiuk 1973 [BM]; Seaward & Aptroot 2006: 779.

Roccella montagnei Bel.

ALDABRA: Taylor 1969 [BM sub *R. endocrocea*]; Hnatiuk 1973 [BM]; Seaward et al. 1996: 32; Seaward et al. 2002: 476; Seaward & Aptroot 2006: 779.

* *Rubrotricha helminthospora* Lücking, Sérus. & Vézda

MAHÉ: Morne Blanc, 600m, 1974, A. H. Norkett [BM]; Gerlach 2002 [MRDS 115553 sub *Loflammia gabrielis*].

* *Sarcographa heteroclita* (Mont.) Zahlbr.

ALDABRA: on *Mystroxydon aethiopicum*, Cinque Cases, 1973, R. J. Hnatiuk [BM]; Harrington record in Seaward et al. 2002: 476 and Seaward & Aptroot 2006: 779 = *Leiorreum exaltatum*. MAHÉ: La Misère Road, 430m, 1973, A. H. Norkett [BM]. PRASLIN: near Plaine Hollandaise, c.180m, 1974, A. H. Norkett [BM]. SILHOUETTE: path from La Passe to Grande Barbe, 200m, 1973, A. H. Norkett [BM; MRDS 114520].

Sarcographa labyrinthica (Ach.) Müll.Arg.

MAHÉ: near path to Vingt-Cinq Sous, c.400m, 1973, A. H. Norkett [BM]. PRASLIN: Glacis Noir, c.320m, 1974, A. H. Norkett [BM]. SILHOUETTE: Seaward & Aptroot 2003: 436, 2006: 779.

Sarcographa tricosia (Ach.) Müll.Arg.

ALDABRA: on dead wood, Takamaka Grove, 1973, A.Donaldson [BM]. MAHÉ: top of Brilliant River Gorge, c.330m, 1973, A. H. Norkett [BM]. SILHOUETTE: Seaward & Aptroot 2003: 436, 2006: 779.

Siphula decumbens Nyl.

MAHÉ: Krog 1993 [O]; Seaward & Aptroot 2006: 779. SILHOUETTE: Seaward & Aptroot 2003: 436, 2006: 779.

Sphinctrina tubaeformis A.Massal.

ALDABRA: Hnatiuk 1973 [BM]; Seaward et al. 2002: 476; Seaward & Aptroot 2006: 779. LA DIGUE: Seaward & Aptroot 2006: 779.

* *Sporopodium aurantiacum* (Müll.Arg.) Lücking

MAHÉ: Morne Blanc, 600m, 1974, A. H. Norkett [BM].

Sporopodium leprieurii Mont.

MAHÉ: Seaward & Aptroot 2006: 779.

Sporopodium phyllocharis (Mont.) A.Massal.

SILHOUETTE: Seaward & Aptroot 2003: 436, 2006: 779.

* *Sporopodium subflavescens* Lücking

MAHÉ: near stream, Congo Rouge, 700m, 1973, A. H. Norkett [BM]. SILHOUETTE: Pot à Eau Ridge, 550m, 1973, A. H. Norkett [BM].

Stegobolus auberianus (Mont.) A.Frisch & Kalb.

SILHOUETTE: Seaward & Aptroot 2003: 432, 2006: 774 (as *Ocellularia auberiana*).

Stegobolus polillensis (Vain.) A.Frisch

ALDABRA: Hnatiuk 1973 [BM]; Seaward et al. 2002: 475; Seaward & Aptroot 2006: 774 (as *Ocellularia polillensis*).

Sticta cyphellulata (Müll.Arg.) Hue

MAHÉ: Trois Frères, 600-750m, 1993 H.Krog [O]. SILHOUETTE: Seaward & Aptroot 2003: 436, 2006: 779.

Sticta orbicularis (A.Br. ex Meyen & Flot.) Hue

MAHÉ: Norkett 1973 [BM; MRDS 114395]; Seaward & Aptroot 2006: 779.

Sticta weigeli (Ach.) Vain.

MAHÉ: Trois Frères, 600-750m, 1993, H.Krog [O]; Beaver 1994 [MRDS 114300]. SILHOUETTE: Seaward & Aptroot 2003: 437, 2006: 780.

* *Stirtonia gibberulosa* Groenh.

MAHÉ: Dans Iles, 20m, 1973, A. H. Norkett [BM; MRDS 114637].

* *Strigula concreta* (Fée) R.Sant.

MAHÉ: path up Signal Hill, 300m, 1973, A. H. Norkett [BM].

* *Strigula nitidula* Mont.

MAHÉ: Botanical Gardens, Victoria, 1973, A. H. Norkett [BM].

* *Strigula orbicularis* Fr.

MAHÉ: by St Louis River, 70m, 1973, A. H. Norkett [BM].

* *Strigula phyllogena* (Müll.Arg.) R.C.Harris

SILHOUETTE: Scott Vale, 350m, 1973, A. H. Norkett [BM].

Tephromela atra (Huds.) Hafellner ex Kalb

MAHÉ: Norkett 1973 [BM]; Seaward & Aptroot 2006: 780.

* *Thelotrema defossum* (Müll.Arg.) Mangold

ALDABRA: Île Polymnie, 1973, R. J. Hnatiuk [BM].

* *Thelotrema euphorbiae* A.Frisch

ALDABRA: on *Ochna ciliata*, Cinque Cases, 1973, R. J. Hnatiuk [BM; MRDS 114193].

* *Thelidium* cf. *farlowii* Riddle

ALDABRA: on roof of cave in sea cliff, Cinque Cases, 1973, R. J. Hnatiuk [BM; MRDS 114483].

* *Thelotrema hnatiukii* Sipman ined.

ALDABRA: on *Ficus reflexa*, Cinque Cases, 1973, R. J. Hnatiuk 730461 [BM].

This new species resembles *T. euphorbiae* closely by the size of the ascocarps, the endophloeodic thallus and the small, colourless, I-negative spores. It differs by the spores being submuriform rather than transversely ca. 9-septate, and the brownish rather than colourless proper exciple, visible through the pore.

* *Thelotrema santessonii* Hale

MAHÉ: Le Niol Road, c.150m, 1973, A. H. Norkett [BM]. PRASLIN: Fond B'Offay, 1974, A. H. Norkett [BM; MRDS 115509].

Thelotrema subweberi Sipman

MAHÉ: Norkett 1973 [BM]; Seaward & Aptroot 2006: 780. SILHOUETTE: path from La Passe to Grande Barbe, c.200m, 1973, A. H. Norkett [BM; MRDS 114587].

Tomasellia eschweileri (Müll.Arg.) R.C.Harris

ALDABRA: on *Pandanus*, Cinque Cases, 1969, J.Taylor [BM]; Hnatiuk 1973 [BM]. FRÉGATE: Seaward & Aptroot 2006: 780. MAHÉ: NE Point, 1973, A.H.Norkett [BM; MRDS114362]. NORTH: Seaward & Aptroot 2006: 780. SILHOUETTE: Seaward & Aptroot 2003: 437, 2006: 780.

* *Trapeliopsis flexuosa* (Fr.) Coppins & P.James

ALDABRA: on dead wood, Île Polymnie, 1974, R. J. Hnatiuk [BM; MRDS 114280].

Tricharia helminthospora R.Sant.

SILHOUETTE: Seaward & Aptroot 2003: 437, 2006: 780.

Trypethelium eluteriae Spreng.

ALDABRA: Hnatiuk 1973 [BM]; Seaward et al. 2002: 476; Seaward & Aptroot 2006: 780.

* *Trypethelium nitidiusculum* (Nyl.) R.C.Harris

MAHÉ: Old Mission, Forêt Noir Road, 450m, 1973, A. H. Norkett [BM; ABL].

Trypethelium ochroleucum (Eschw.) Nyl.

ALDABRA: Île Polymnie, 1973, R. J. Hnatiuk [BM]. SILHOUETTE: Seaward & Aptroot 2003: 437, 2006: 780.

* *Trypethelium tropicum* (Ach.) Müll.Arg.

ALDABRA: Takamaka Camp, Grande Terre, 1969, J.Taylor [BM]; Hnatiuk 1973 [BM; MRDS 114065].

* *Usnea* cf. *articulata* (L.) Hoffm.

MAHÉ: summit of Copolia, 450-510m, 1993, H.Krog [O].

Usnea baileyi (Stirt.) Zahlbr.

MAHÉ: Forêt Noir Road, c.460m, 1974, A. H. Norkett [BM]; Beaver 1994 [MRDS 114333]. SILHOUETTE: Seaward & Aptroot 2003: 437, 2006: 780.

Usnea exasperata (Müll.Arg.) Motyka

LA DIGUE: Seaward & Aptroot 2006: 780. MAHÉ: La Misère Road, c.430m, 1973, A.H.Norkett [BM; MRDS 114394]; Krog 1993 [O]. SILHOUETTE: Norkett 1973 [BM; MRDS 114512]; Seaward & Aptroot 2003: 437, 2006: 780.

Usnea leprosa Motyka

MAHÉ: Norkett 1974 [BM]; Krog 1993 [O]; Seaward & Aptroot 2006: 780. SILHOUETTE: Seaward & Aptroot 2003: 437, 2006: 780.

Usnea pulvinata Fr.

MAHÉ: Seaward & Aptroot 2006: 780.

* *Usnea rubicunda* Stirt.

LA DIGUE: from debris below bird nests, c.260m, 1994, K. Beaver [MRDS 114345].

Usnea trichodeoides Vain.

Acknowledgements

We dedicate this paper to our dear friend and colleague, Harrie Sipman, who has supported, and continues to support, our work in so many ways. We are especially grateful to Laurens Sparrius for his diagnosis of *Enterographa aldabrensis* and for his help with the determination of *Enterographa*, and to Robert Lücking and Matthias Schultz for their exceptional input with regard to the foliicolous and cyanolichens lichens respectively. We are also grateful to Teuvo Ahti (*Cladonia*), Damien Ertz (*Opegrapha*), Martin Kukwa (*Ochrolechia*), Thor Lumbsch (*Lecanora*), Harrie Sipman (*Ocellularia*, *Myriotrema*, *Lepraria*, *Leucodecton*), Rick Seavey (*Arthonia*), Anders Tehler (*Roccella*) and Antonín Vězda (*Arthothelium*, *Dimerella*, *Fellhanera*) for their help in the identification of some more critical material, and to K. Beaver, Tassilo Feuerer (HBG), Sean Edwards (MANCH), Scott LaGreca (BM), E. Timdal (O), G. Hnatiuk and T. Pócs for their considerable support and loan of herbarium material.

References

- APTROOT, A., SIPMAN, H.J.M. & J.L. SPIER, 2003. Diagnostic chemistry of foliicolous *Enterographa*. – *Bryologist* 106: 278–279.
- ARVIDSSON, L. 1982. A monograph of the lichen genus *Coccocarpia*. – *Opera Bot.* 67: 1–96.
- DEGELIUS, G. 1974. The lichen genus *Collema* with special reference to the extra-European species. – *Symb. Bot. Upsal.* 20 (2): 1–215.
- DODGE, C. W. 1959. Some lichens of Tropical Africa. III. Parmeliaceae. – *Ann. Missouri Bot. Garden* 46: 39–193.
- ERIKSSON, O.E. 1992. *Psoroglaena cubensis* and *Flakea papillata* gen. et sp.nov., two corticolous lichens with a pantropical distribution. – *Syst. Ascomycetum* 11: 11–27.
- ERTZ, D. & P. DIEDERICH, 2007. Revision of the *Opegrapha* species with muriform ascospores (previously *Dictyographa*) (lichenized *Roccellaceae*). – *Lichenologist* 39: 143–151.
- HALE, M. E. 1965. A monograph of *Parmelia* subgenus *Amphigymnia*. – *Contr. U. S. Nat. Herb.* 36: 193–358.
- HENSSEN, A. 1986. The genus *Paulia* (Lichinaceae). – *Lichenologist* 18: 201–229.
- HENSSEN, A. 1987. *Lichenothelia*, a genus of microfungi on rocks. – In: *Progress and Problems in Lichenology in the Eighties* (ed. E. Peveling): 257–293. – Cramer, Berlin.
- HENSSEN, A. 1995. *Psoroglaena costaricensis*, a new lichen from Costa Rica, and remarks on other taxa of the genus *Psoroglaena* (Verrucariaceae). – *Bibliotheca Lichenologica* 57: 199–210.
- HENSSEN, A. & G. THOR, 1994. Developmental morphology of the “Zwischengruppe” between Ascohymeniales and Ascoloculares. – In *Ascomycete Systematics: Problems and Perspectives in the Nineties* (ed. D. L. Hawksworth): 43–56. – Plenum Press, New York.
- HENSSEN, A. & G. THOR, 1998. Studies in taxonomy and developmental morphology in *Chiodecton*, *Dichosporidium*, *Erythrodecton* and the new genus

- Pulvinodecton* (Arthoniales, lichenized Ascomycetes). – Nordic Journal of Botany 18: 95–120.
- HUE, A. M. (1892) *Lichenes Exotici*. G. Masson, Paris.
- KREMPELHUBER, A. VON 1869. *Parmelia perforata* Ach., ihre sichere Erkennung und Unterscheidung von verwandten Arten. – Regensburgs Flora 1869: 219–223.
- KROG, H. & T. D. V. SWINSCOW, 1981. *Parmelia* subgenus *Amphigymnia* (lichens) in East Africa. – Bull. Br. Mus. (Nat. Hist.), bot. ser. 9: 143–231.
- NYLANDER, W. 1885. *Parmeliae exoticae novae*. – Flora 68: 605–615.
- ROBERTSON, A. 1989. Flowering Plants of Seychelles. – Royal Botanic Gardens, Kew.
- SCHULTZ, M. & A. APTROOT. 2008. Notes on poorly known, small cyanobacterial lichens from predominantly wet tropical to subtropical regions. – Sauteria 15: 433–458.
- SEAWARD, M. R. D. & A. APTROOT, 2003. Lichens of Silhouette Island (Seychelles). – Bibliotheca Lichenologica 86: 423–439.
- SEAWARD, M.R.D. & A. APTROOT, 2004. Four Seychelles lichens new to science. – Lichenologist 36: 119–124.
- SEAWARD, M.R.D. & A. APTROOT, 2006. A preliminary checklist of lichens for the Seychelles group. J.Hattori Bot.Lab. 100: 765–781.
- SEAWARD, M.R.D., APTROOT, A. & F.A. HARRINGTON, 2002. The lichens of Aldabra, with comments on their distribution. – Bryologist 105: 473–477
- SEAWARD, M.R.D., HAMBLER, C. & A. APTROOT, 1996. Bryophytes and lichens of Aldabra. – Trop. Bryol. 12: 29–33.
- SIPMAN, H.J.M. 2004. Survey of *Lepraria* species with lobed thallus margins in the tropics. – Herzogia 17: 23–35.
- SPARRIUS, L.B. 2004. A monograph of *Enterographa* and *Sclerophyton*. – Biblioth. Lichenol. 89: 1–141.
- SWINSCOW, T.D.V. & H. KROG, 1988. Macrolichens of East Africa. – British Museum (Natural History), London.
- TIMDAL, E. & H. KROG. 2001. Further studies on African species of the lichen genus *Phyllopsora* (Lecanorales). – Mycotaxon 77 : 57–89.
- VEZDA, A. 2000. Lichenes Rariores Exsiccati, Fasciculi 43 & 44. – Brno. [nos. 421, 422, 423, 425, 426, 427, 428, 429, 431, 432, 433, 436]